

Analytical material

№ _____

July 12, 2024

Report on the implementation of the project «Application of the DEGURBA (UN HABITAT) approach to assess the level of urbanization in certain regions of Kazakhstan»

Introduction: This report is a presentation of the results of the application of the DEGURBA method of determining the degree of urbanization, approved by the UN in 2020, to assess the level of urbanization in Akmola and Almaty regions, as well as the impact of the urban centers of Astana and Almaty on the level of urbanization of these areas.

The application of the DEGURBA method to population data for the beginning of 2022 for settlements, taking into account the results of the 2021 Census, was carried out using geospatial data of settlements (in shape-file format) and open and free tools developed by the European Commission's Global Layer of Human Settlements (GHSL) Project.

The results of the DEGURBA method showed that the share of the urban population of the Almaty region increased from 16.2% to 78.1%, the number of territorial units classified as rural decreased from 392 to 284; the share of the urban population of the Akmola region increased from 55.8% to 65.3%, the number of territorial units classified as rural decreased from 593 to 587.

The benefits of DEGURBA, some of which include:

- Using a population grid that reduces the displacement caused by the different shapes and sizes of different spatial units;
- Applying the same population and density thresholds around the world, which allows you to compare the results on a global scale;
- providing a consistent way to map the urban and rural continuum, indicating the degree of urbanization and rural areas of each spatial unit;
- uniformity in measurement, which is not affected by the level of development of the territory, i.e., unlike using services to define an urban area, this approach helps to identify areas that qualify as urban and where services should be available.

- the ability to cover the economy of the agglomeration;
- ease of use and cost-effectiveness.

The emphasis is on the fact that DEGURBA is intended to complement, not replace, national definitions, therefore, country data can be aligned with DEGURBA and country definitions and applied according to the desired context.

As part of the project, a number of works have been carried out to clean the shape-file and assign the population of settlements to the polygons of these settlements.

Missing polygons were created. Multipolygons (explode multiple polygons to single polygons) were separated into single ones. Incorrectly created polygons were deleted and recreated. The names of settlements were updated in the shape-file and OKATO codes were introduced.

Data and tools used

1. Geospatial data of settlements in the Shape-file format from JSC "Garyshsapary" in 2022,
2. The population of settlements at the beginning of 2022, taking into account the results of the Population Census of 2021.
3. Data from «The global layer of settlements»:
 - Grid of built-up areas for 2020, resolution of 100 cubic meters;
 - 2020 sketch grid, resolution 1000 meters;
4. Tools «The global layer of settlements»:
 - GHSPopulationtoGrid is an application for obtaining a population grid;
 - GHSDegreeofUrbanizationGrid is an application for obtaining a grid of the level of urbanization;
 - GHSTerritorialUnitClassifier is an application for obtaining the classification of settlements.

By uploading a grid of built-up volumes and the population of settlements to GHSPopulationtoGrid, a population grid is obtained, where the population of a settlement is distributed according to the proportions of built-up volumes in these cells.

1st level

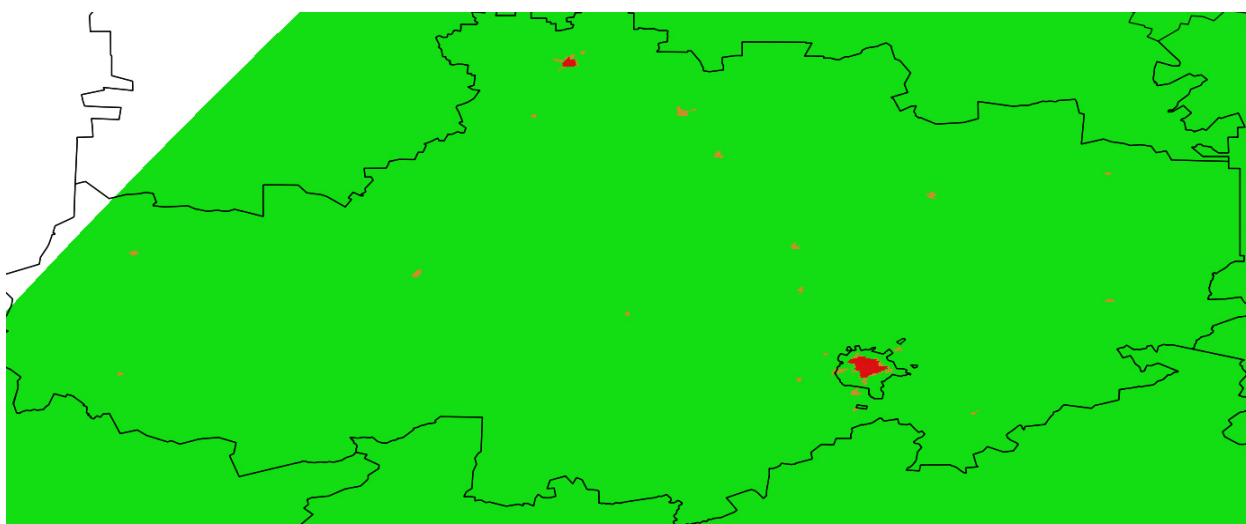
		Minimum population size of the cluster of cells (settlement size, inhabitants)		No minimum population size (not an entity)
		≥ 50 k	50 k - 5 k	
Population density of cells, inhabitants / km ²	≥1500	Urban Centre	Urban Cluster	Rural Grid Cells
	1500 - 300			
	300 - 50			
	<50			

2nd level

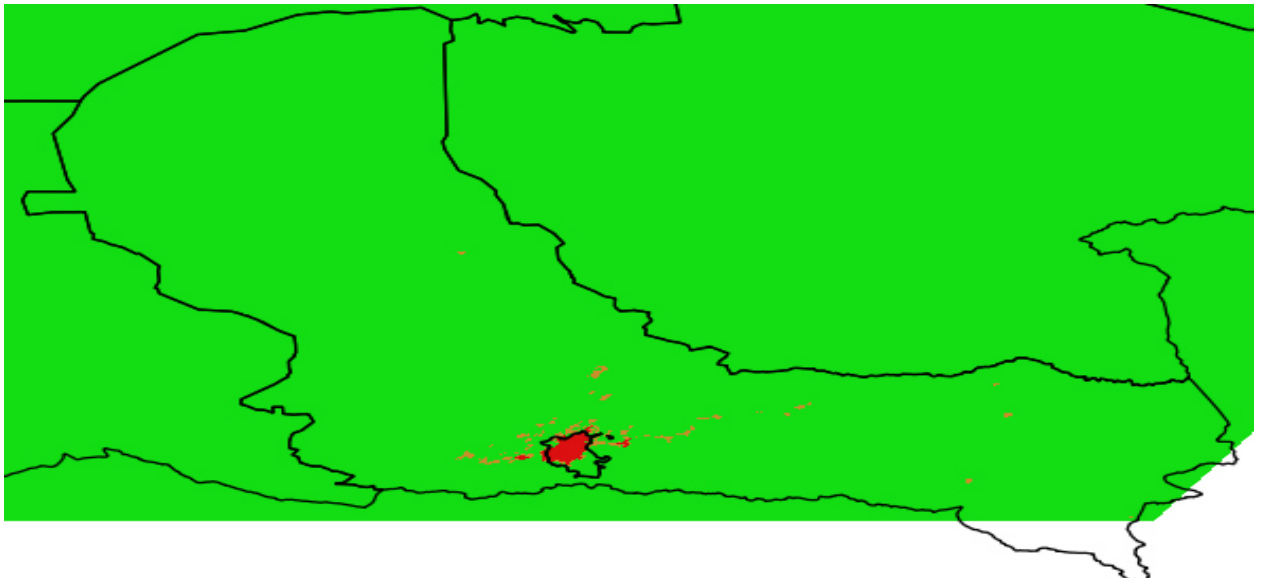
		Minimum population size of the cluster of cells (settlement size, inhabitants)			No minimum population size (not an entity)
		≥ 50 k	50 k - 5 k	5 k - 0.5 k	
Population density of cells, inhabitants / km ²	≥1500	Urban Centre	Dense Urban Cluster	Rural Cluster	Suburban or peri-urban grid cells
	1500 - 300		Semi-dense Urban Cluster		
	300 - 50				
	<50				
					Low Density rural grid cells
					Very Low Density rural grid cells

Picture 1. Classification parameters of population grid cells

At the first level, the entire territory is divided into three classes. First class – urban centers. Urban centers include cells with a density of 1,500 or more people per 1 sq. km. and the total population of such adjacent cells with a four-line neighborhood should be 50,000 or more people. Urban clusters include cells with a density of 300 to 1,500 people per 1 sq. km and the total population of such adjacent cells with an eight-sided (eight-point) neighborhood should be from 5,000 to 50,000 people. All other cells not classified as urban centers or urban clusters form rural grid cells.

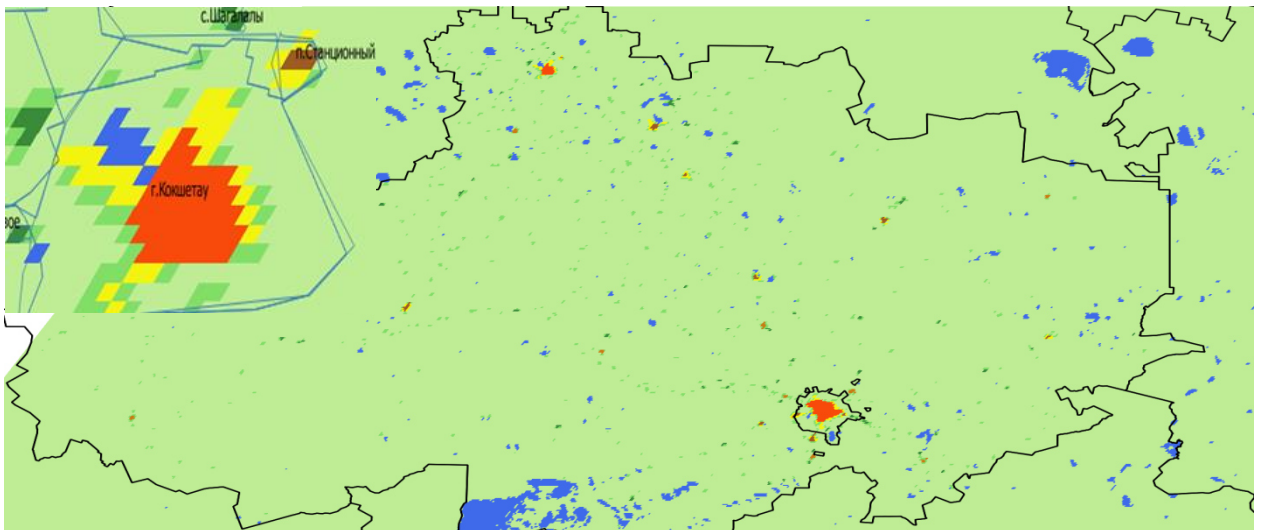


Picture 2. Classification of the territory of Akmola region and Astana city into raster urban centers, urban clusters and rural grid cells



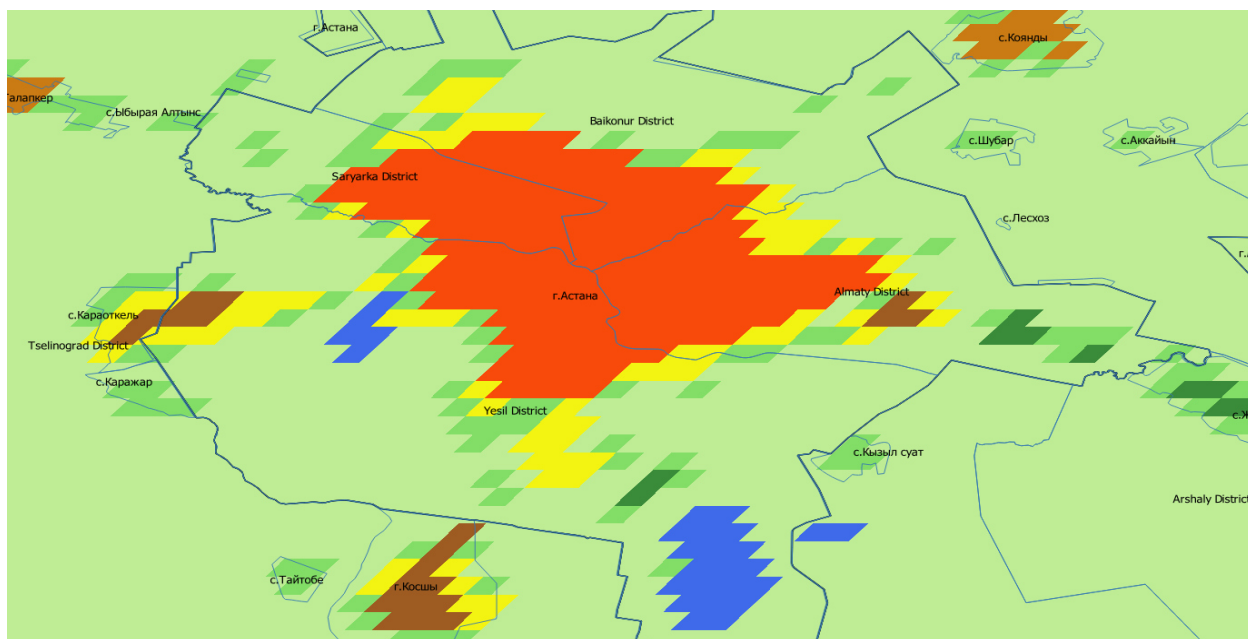
Picture 3. Classification of the territory of Almaty region and Almaty city into raster urban centers, urban clusters and rural grid cells

At the second level, the "Urban Cluster" is subdivided into subclasses "Dense Urban Cluster", "Semi-dense urban Cluster" and "Suburban Grid cells". "Rural grid cells" are divided into "Rural cluster", "Rural grid cells with low density" and "Rural grid cells with very low density" depending on the density of cells and the population in these cells in accordance with the classification parameters of grid cells, taking into account the 8-sided neighborhood and the total number of cells.



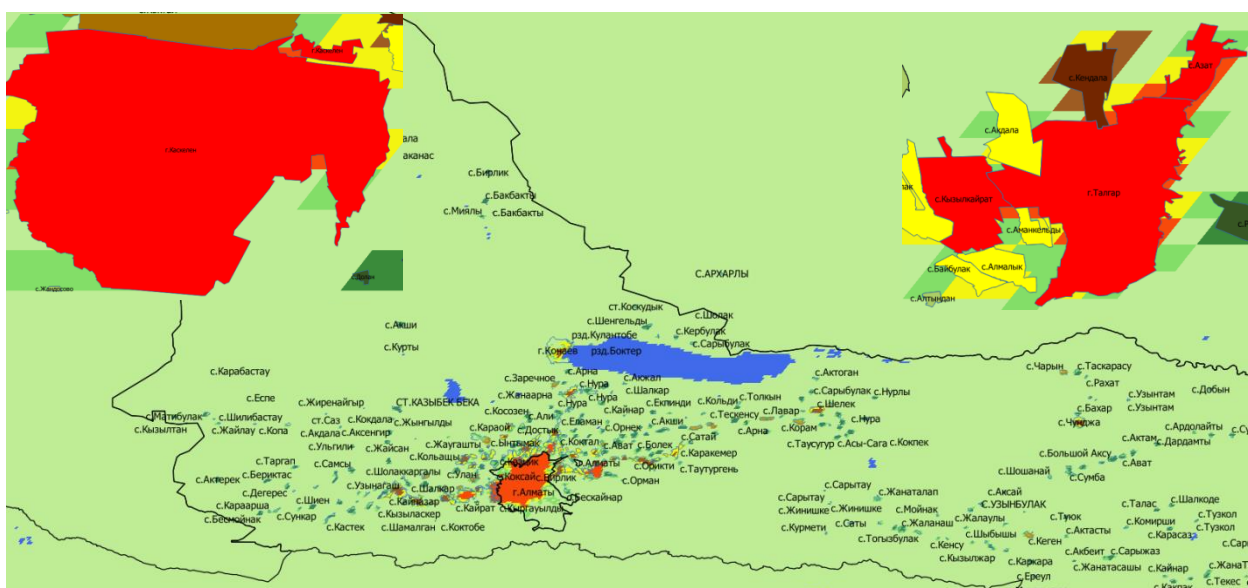
Picture 4. Urbanization grid of the Akmola region

There is a single urban center in Akmola region – Kokshetau city.



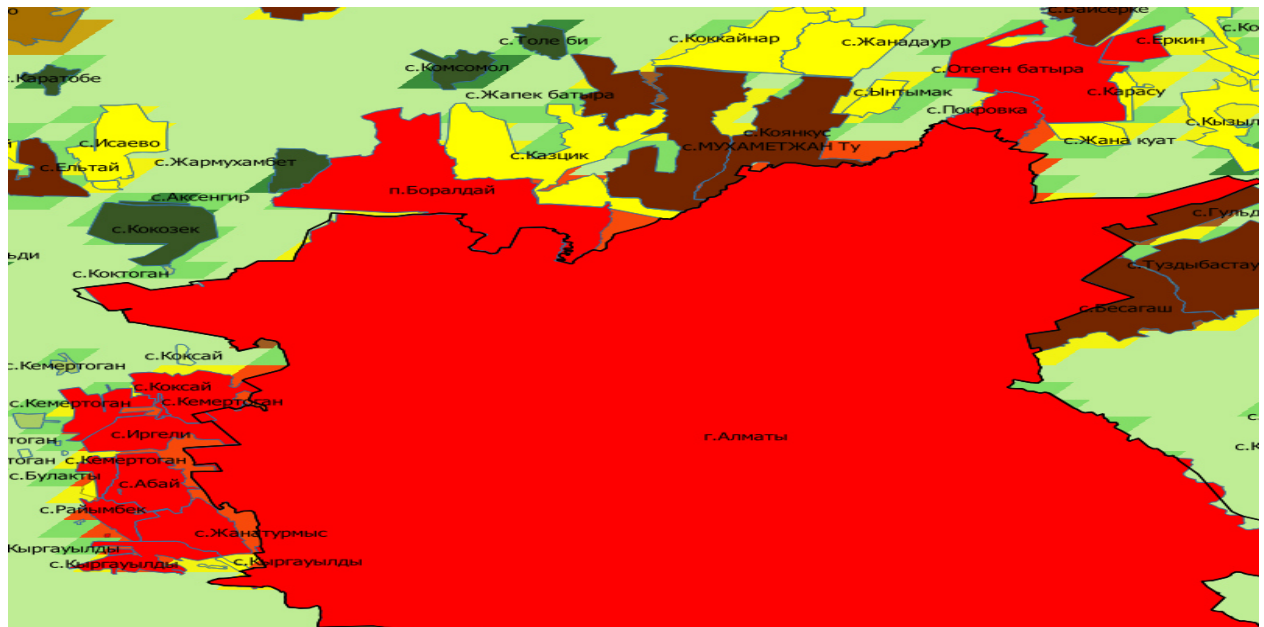
Picture 5. Urbanization level grid of the Astana region

The central part of the territory of Astana is defined as an urban center with a density of more than 1,500 people per 1 sq.km, then the density decreases first to suburban cells, then to rural grid cells with low density, even closer to the administrative borders the territory is almost uninhabited. In addition, on the territory of Astana, the Urker microdistrict of the Yesilsky district and the International one of the Almaty district are classified as dense urban clusters with a density of 1,500 people per square meter.km and a total number of up to 50,000 people.



Picture 6. Urbanization grid of the Almaty region

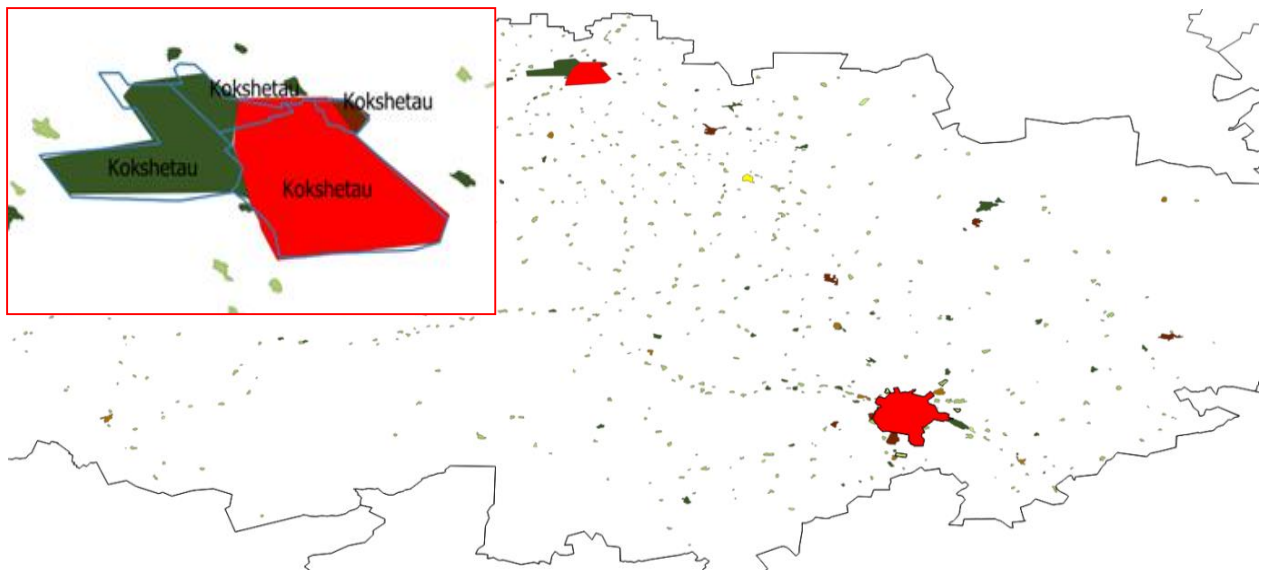
In the Almaty region, two cities are classified as urban centers - Kaskelen and Talgar with the villages of Azat and Kyzylkairat. In addition, several villages of Karasai, Ili and Talgar districts formed a common urban center with Almaty (Fig.7).



Picture 7. Settlements of the Almaty region

Based on the existing grid of the level of urbanization, a classification of settlements was obtained in accordance with the following parameters.

Cities	>= 50% population in the city center
Dense towns	A large part of the population lives in the dense urban cluster
Semi-dense towns	A large part of the population lives in the semi-dense urban cluster
Suburbs	>= 50% population in a suburb cell cluster
Villages	A large part of the population lives in the rural cluster
Dispersed rural areas	A large part of the population lives rural grid cells with low density
Mostly uninhabited areas	A large part of the population lives rural grid cells with very low density



Picture 8. Classification of settlements in the Akmola region

In Akmola region there is one high–density city (large city) - Kokshetau, 9 medium-density settlements classified as cities (dense medium city/densetown), 11 semi-dense settlements (semi-dense small town/semi-densetown), 1 suburb, 58 villages, 427 sparsely populated settlements, 102 almost uninhabited settlements. The number of urban settlements has increased from 16 to 22. The number of territorial units classified as rural decreased from 593 to 587.

21.9% of the region's population lives in a large city of Akmola region, 31.0% in "dense medium–sized cities", 10.1% in "semi-dense small towns", 2.3% in suburbs, 14.0% in villages, 19.8% in sparsely populated settlements, 0.9% of the population in almost uninhabited areas.

There are 16 high-density settlements in the Almaty region, 33 medium-density settlements and 22 semi-dense settlements, 41 suburbs, 154 villages, 103 sparsely populated settlements, 27 almost uninhabited settlements.

The number of urban settlements has increased from 4 to 92 units. The number of territorial units classified as rural decreased from 392 to 284. 20.8% of the region's population lives in the "large cities" of the Almaty region, 37.4% in "dense medium–sized cities", 7.6% in "semi-dense small towns", 10.5% in the suburbs, 21.5% in villages, and sparsely populated in populated areas – 2.6%, in almost uninhabited areas 0.1% of the population (Table 1).

The number and population of settlements according to the DEGURBA classification

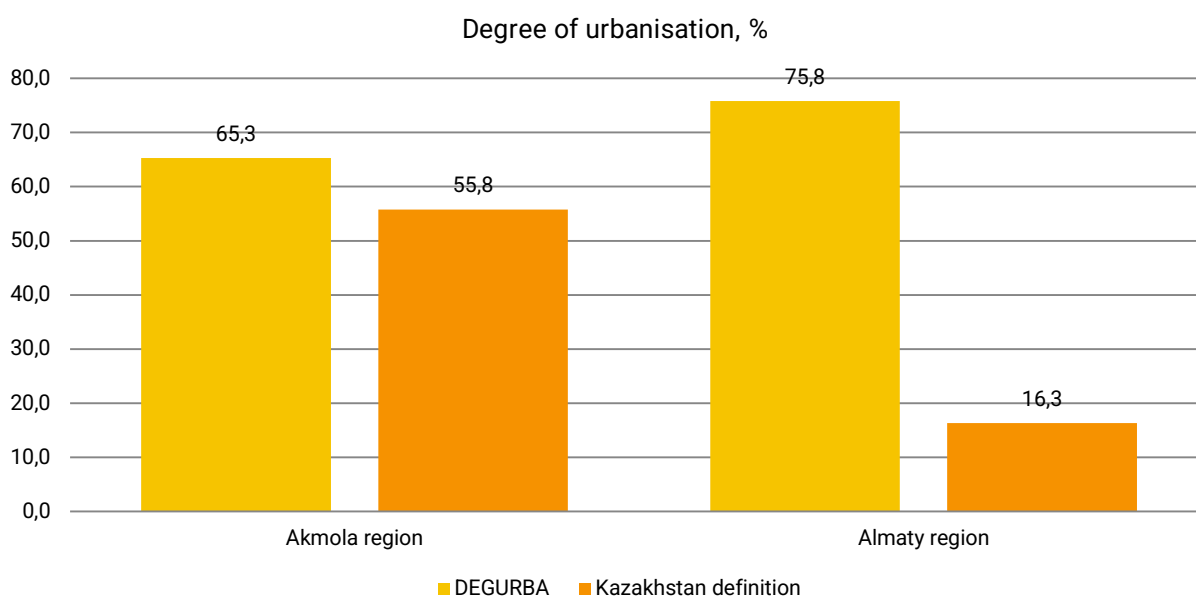
Table 1.

	DEGURBA, ATE									Kazakhstan definition, ATE	
	Cities	Medium and small towns				Rural area				Urban area	Rural area
			Dense towns	Semi-dense towns	Suburbs		Villages	Dispersed rural areas	Mostly uninhabited areas		
Akmola	1	21	9	11	1	587	58	427	102	16	593
Almaty	16	96	33	22	41	284	154	103	27	4	392
Astana city	1	-	-	-	-	-	-	-	-	1	-
Almaty city	1	-	-	-	-	-	-	-	-	1	-

	DEGURBA, people									Kazakhstan definition, people	
	Cities	Medium and small towns				Rural area				Urban area	Rural area
			Dense towns	Semi-dense towns	Suburbs		Villages	Dispersed rural areas	Mostly uninhabited areas		
Akmola	172315	340673	243331	79288	18054	272743	110048	155905	6790	438207	347524
Almaty	299805	822115	554121	113117	154877	358688	318610	39130	948	241061	1239547
Astana city	1296311	-	-	-	-	-	-	-	-	1296311	-
Almaty city	2101485	-	-	-	-	-	-	-	-	2101485	-

As the final result of applying the DEGURBA method to the population of settlements in Akmola and Almaty regions, the overall level of urbanization at the beginning of 2022 according to the DEGURBA method in Akmola region amounted to 65.3% and increased by 9.5 percentage points in comparison with the level of urbanization of the region according to the Kazakh definition of the urban area.

The overall level of urbanization according to the DEGURBA method in the Almaty region amounted to 75.8%, an increase in comparison with the level of urbanization of the region according to the Kazakh definition of urban area by several times (or by 59.7 percentage points).



Dense towns of Akmola region

Locality	Area	Population
Atbasar c.	Atbasar district	31 324
Akkol c.	Akkol district	16 048
Stepnogorsk c.	Stepnogorsk c.a.	49 783
Ereymantau c.	Ereymantau district	12 582
Shchuchinsk c.	Burabay district	47 512
Karaotkel v.	Korgalzhyn district	9 884
Kosshy c.	Kosshy c.a.	48 985
Akmol v.	Korgalzhyn district	13 544
Stantsionny s.	Kokshetau c.a.	13 669

Semi-dense towns of Akmola region

Locality	Area	Population
Astrakhanka v.	Astrakhan district	6 082
Zerendi v.	Zerendi district	7 167
Esil c.	Esil district	11 432
Derzhavin c.	Zharkain district	7 070
Arshaly s.	Arshaly district	7 946
Bestobe s.	Stepnogorsk c.a.	5 985
Shortandy s.	Shortandy district	6 558
Stepnoe v.	Shortandy district	1 329
Talapker v.	Tselinograd district	8 031
Koyandy v.	Tselinograd district	9 687
Kabanbay batyr v.	Tselinograd district	8 001

Suburbs of Akmola region

Locality	Area	Population
Makinsk c.	Bulandy district	18 054

Cities of Almaty region

Locality	Area	Population	City center
Azat v.	Enbekshikazakh district	4 941	Talgar c.
Boralday s.	Ile district	36 599	Almaty c.
Pokrovka v.	Ile district	5 156	Almaty c.
Otegen batyr v.	Ile district	32 122	Almaty c.
Abai v.	Karasay district	8 463	Almaty c.
Kemertogan v.	Karasay district	5 770	Almaty c.
Koksay v.	Karasay district	10 696	Almaty c.
Bulakty v.	Karasay district	3 682	Almaty c.
Zhanaturmys v.	Karasay district	4 554	Almaty c.
Irgely v.	Karasay district	16 856	Almaty c.
Raymbek v.	Karasay district	6 038	Almaty c.
Kyrgauyldy v.	Karasay district	8 708	Almaty c.
Talgar c.	Talgar district	64 372	Almaty c.
Erkyn v.	Talgar district	2 758	Almaty c.
Kyzylkairat v.	Talgar district	8 379	Talgar c.
Kaskelen c.	Kaskelen c.a.	80 711	Kaskelen c.

Dense towns of Almaty region

Елді мекен	Аудан	Халық саны	Елді мекен	Аудан	Халық саны
Konayev c.	Konayev c.a.	54 662	Guldala v.	Talgar district	9 118
Kainazar v.	Enbekshikazakh district	9 536	Besagash v.	Talgar district	16 948
Esik c.	Enbekshikazakh district	41 316	Dostyk v.	Talgar district	359
Baiterek v.	Enbekshikazakh district	11 239	Tuzdybastau v.	Talgar district	22 080
Koktobe v.	Enbekshikazakh district	4 254	Kendala v.	Talgar district	17 329
Shelek v.	Enbekshikazakh district	29 316	Kyshy Baiserke v.	Talgar district	1 976
Rahat v.	Enbekshikazakh district	9 676	Panfilov v.	Talgar district	14 086
Kyzylzhar v.	Enbekshikazakh district	4 559	Shongzhy v.	Uygur district	22 219
Zhanakurylys v.	Zhambyl district	5 894	Tuymebayev v.	Ile district	21 311
Uzynagash v.	Zhambyl district	47 012	Koyankus v.	Ile district	6 536
Kargaly v.	Zhambyl district	31 640	Zhetygen v.	Ile district	20 709
Zhalpaksay v.	Karasay district	7 701	Karaoy v.	Ile district	9 587
Bereke v.	Karasay district	6 894	Zhapek batyr v.	Ile district	12 702
Yeltay v.	Karasay district	3 000	Chapayev v.	Ile district	10 742
Shamalghan v.	Karasay district	29 287	Baiserke v.	Ile district	26 830
Kolashy v.	Karasay district	6 581			
Koshmambet v.	Karasay district	8 184			
Zhibek zholy v.	Karasay district	30 838			

Semi-dense towns of Almaty region

Населенный пункт	Район	Численность
Zhanashar v.	Enbekshikazakh district	5 717
Kazakhstan v.	Enbekshikazakh district	3 984
Baidybek bi v.	Enbekshikazakh district	10 765
Dostyk v.	Enbekshikazakh district	3 374
Zh. Kaypov v.	Enbekshikazakh district	2 564
Koram v.	Enbekshikazakh district	6 553
Karaturyk v.	Enbekshikazakh district	3 790
Mynbayev v.	Zhambyl district	5 428
Mezhdurechenko v.	Ile district	12 008
Zhambyl v.	Karasay district	4 447
Aitey v.	Karasay district	7 061
Batan v.	Karasay district	2 931
Kumaral v.	Karasay district	1 365
Ulan v.	Karasay district	3 200
Ushterek v.	Karasay district	4 098
Narynkol v.	Raiymbek district	6 171
Tumenbay v.	Kegen district	276
Kegen v.	Kegen district	8 783
Zarechnoe v.	Konayev c.a.	5 467
Bakanas v.	Balkhash district	6 296
Sharyn v.	Uygur district	6 237
Enbekshy v.	Karasay district	2 602

Suburbs of Almaty region

Locality	Area	Population	Locality	Area	Population
Kaztai Ultar v.	Enbekshikazakh district	2 658	Akdala v.	Talgar district	1 745
Karakemer v.	Enbekshikazakh district	6 502	Aktas v.	Talgar district	1 944
Orikty v.	Enbekshikazakh district	4 478	Almalyk v.	Talgar district	1 056
Satay v.	Enbekshikazakh district	920	Amangeldy v.	Talgar district	1 025
Tole bi v.	Enbekshikazakh district	2 803	Arkabay v.	Talgar district	1 272
Turgen v.	Enbekshikazakh district	14 026	Baibulak v.	Talgar district	566
Kainazar v.	Zhambyl district	7 599	Belbulak v.	Talgar district	9 294
71 Razyezd v.	Karasay district	912	Birlik v.	Talgar district	3 289
Almalybak v.	Karasay district	4 744	Zhana kuat v.	Talgar district	1 039
Bekbolat Ashek v.	Karasay district	5 246	Karabylak v.	Talgar district	4 935
Yeltay v.	Karasay district	102	Koktal v.	Talgar district	2 400
Zhandosov v.	Karasay district	6 688	Kyzyltu v.	Talgar district	8 900
Isayev v.	Karasay district	3 792	Taldybulak v.	Talgar district	5 629
Kainar v.	Karasay district	1 873	Shymbulak v.	Talgar district	635
Kairat v.	Karasay district	360	Yekpyndy v.	Ile district	3 809
Kumtogan v.	Karasay district	614	Zhanadaur v.	Ile district	5 061
Kyrgauyldy v.	Karasay district	200	Zhanatalap v.	Ile district	2 829
Raymbek v.	Karasay district	1 000	Kazcyk v.	Ile district	14 889
Sauynshy v.	Karasay district	358	Karasu v.	Ile district	2 298
Shalkar v.	Karasay district	4 224	Kokkainar v.	Ile district	8 605
			Yntymak v.	Ile district	4 558

Responsible for the release:
Department of Population Statistics

Department Director:
N. Khanzhigitov
Tel. +7 7172 749061

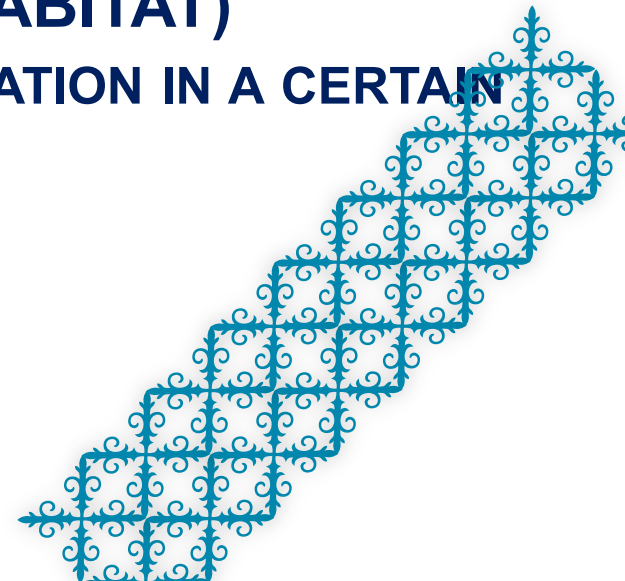
Executor:
Y. Kopes
Tel. +7 7172 749343
E-mail: er.kopes@aspire.gov.kz

Address:
010000, Astana
Mangilik Yel avenue, 8
House of Ministries, 4th entrance

**Bureau of National statistics
Agency for Strategic planning and
reforms of the Republic of
Kazakhstan**



**APPLICATION OF DEGURBA (UN HABITAT)
APPROACH TO ASSESS THE LEVEL OF URBANIZATION IN A CERTAIN
REGIONS OF KAZAKHSTAN**



Used data and tools

1. Grid of built-up areas, grid of a land,
2. GHS Population to Grid,
3. GHS Degree of Urbanization Grid,
4. GHS Territorial Unit Classifier,
5. Shape-file by SC «Garysh sapary»

<https://ghsl.jrc.ec.europa.eu/>



Data and tools

Free data and tools produced by the GHSL

[Data overview](#)

[Datasets](#)

[Download GHSL data](#)

[FAQ](#)

[Tools info and download](#)

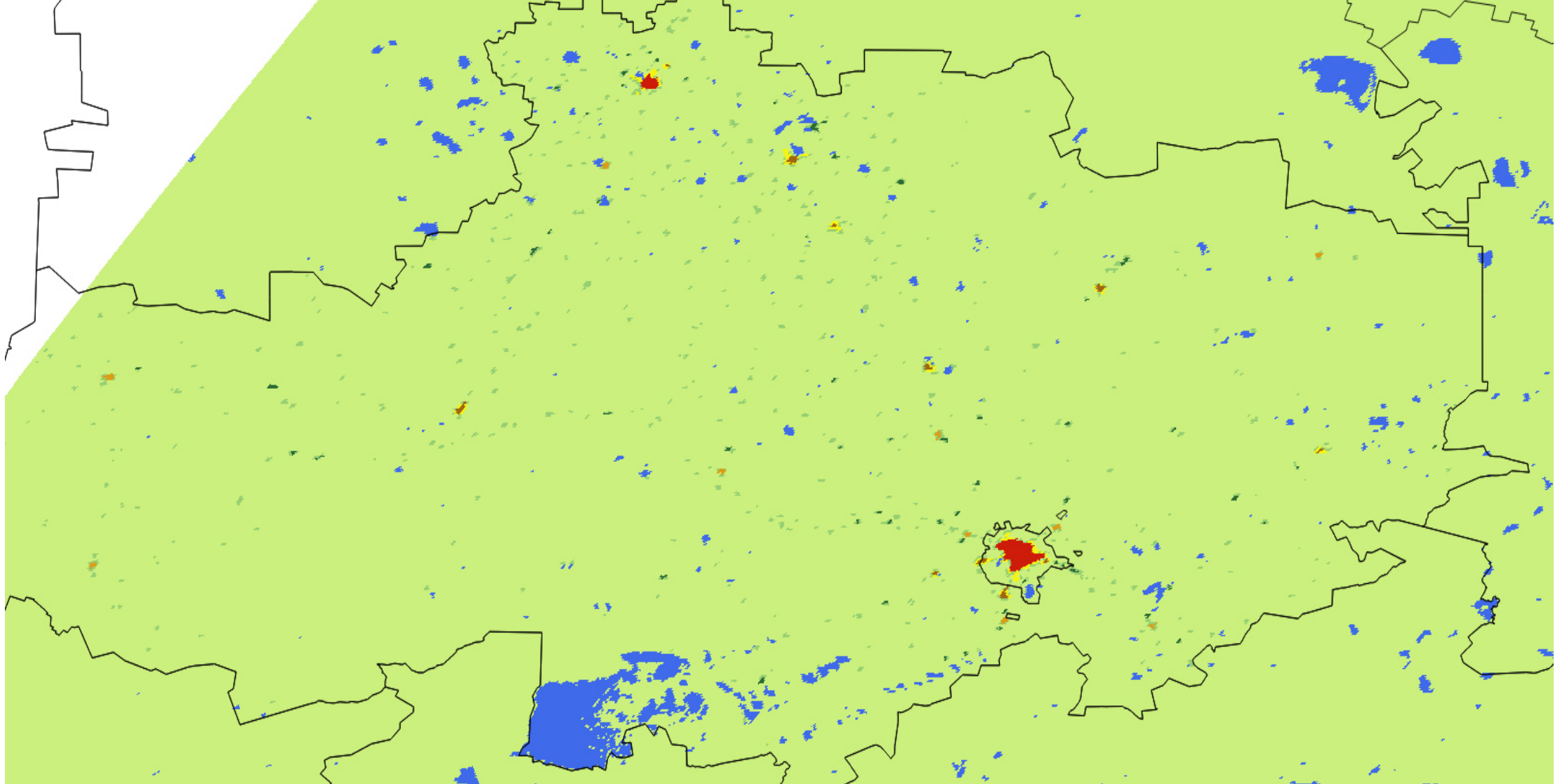
1st level

		Minimum population size of the cluster of cells (settlement size, inhabitants)		No minimum population size (not an entity)
		≥ 50 k	50 k - 5 k	
Population density of cells, Inhabitants / km ²	≥1500	Urban Centre	Urban Cluster	Rural Grid Cells
	1500 - 300			
	300 - 50			
	<50			

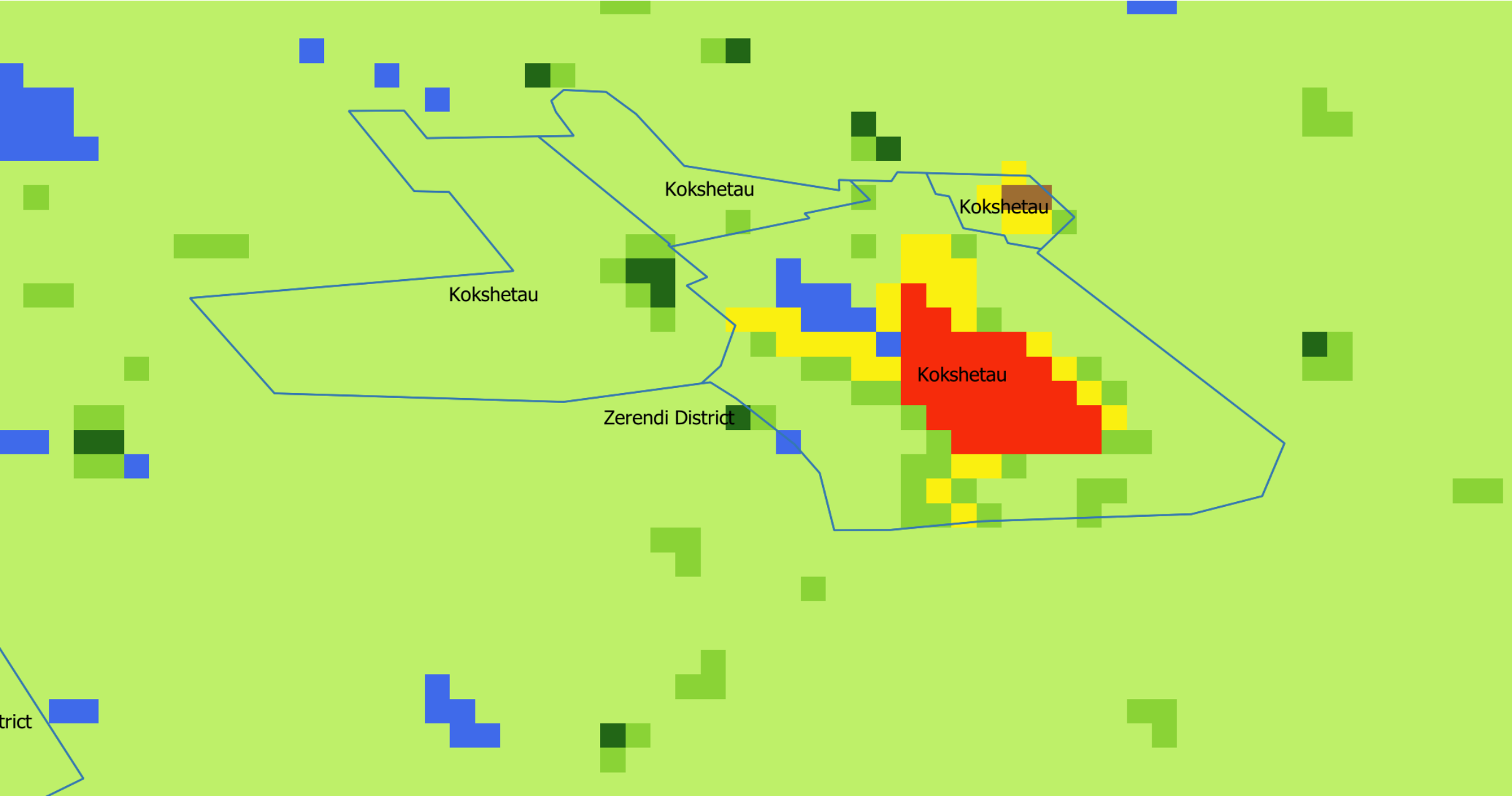
2nd level

		Minimum population size of the cluster of cells (settlement size, inhabitants)			No minimum population size (not an entity)
		≥ 50 k	50 k - 5 k	5 k – 0.5 k	
Population density of cells, Inhabitants / km ²	≥1500	Urban Centre	Dense Urban Cluster	Rural Cluster	Suburban or peri-urban grid cells
	1500 - 300		Semi-dense Urban Cluster		
	300 - 50				
	<50				
					Low Density rural grid cells
					Very Low Density rural grid cells

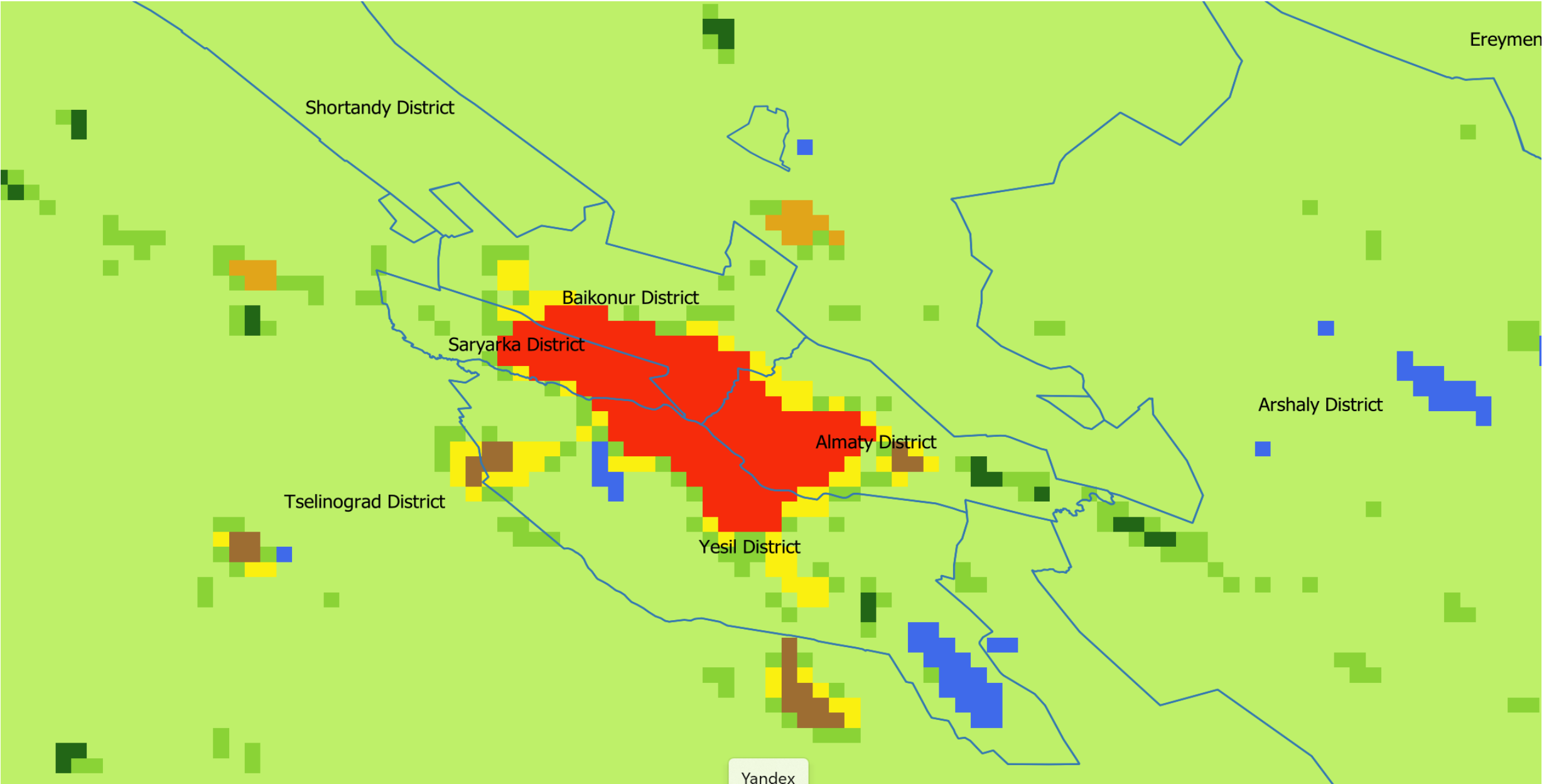
Urbanization level grid of the Akmola region



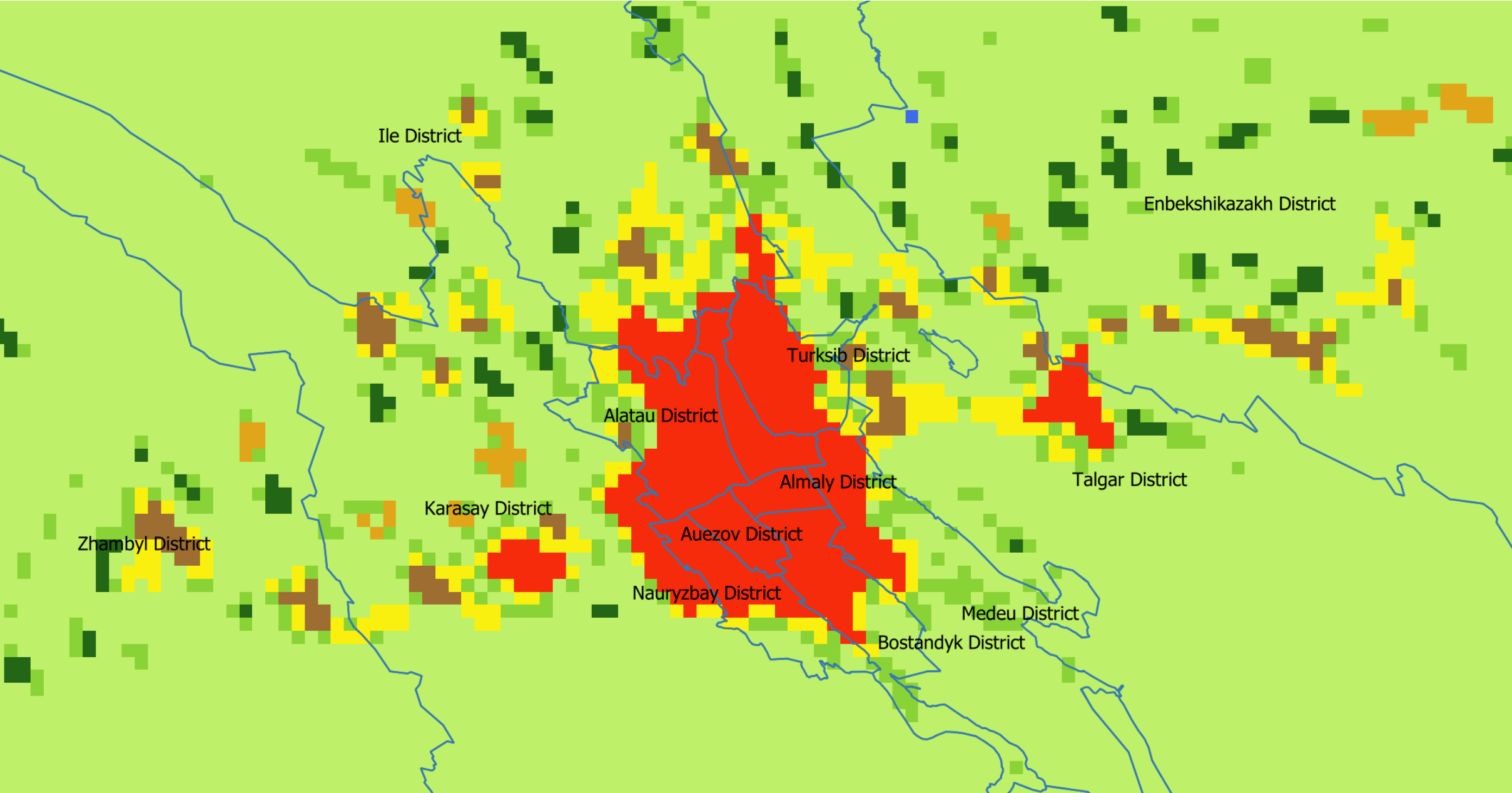
Urbanization level grid of the Kokshetau c.a.



Urbanization level grid of the Astana city



Urbanization level grid of the Almaty region and Almaty city

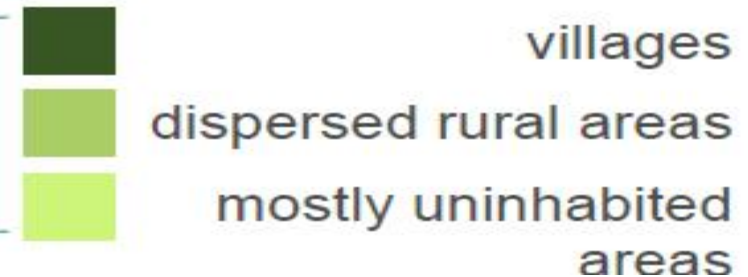
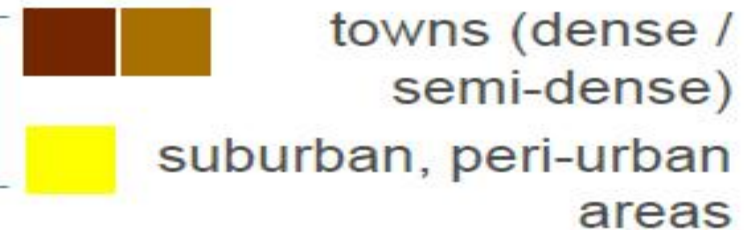


The Degree of Urbanisation

1st Level



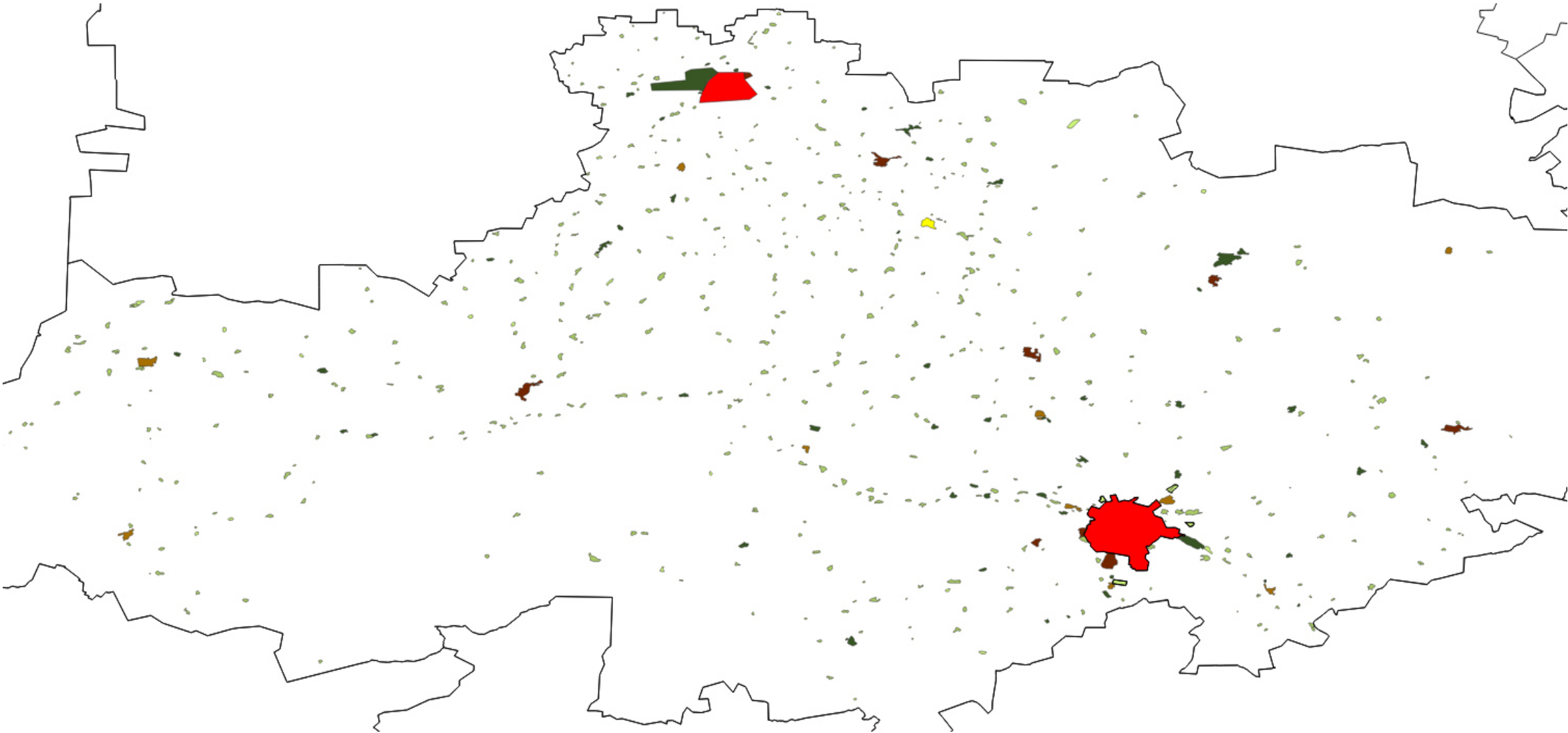
2nd Level



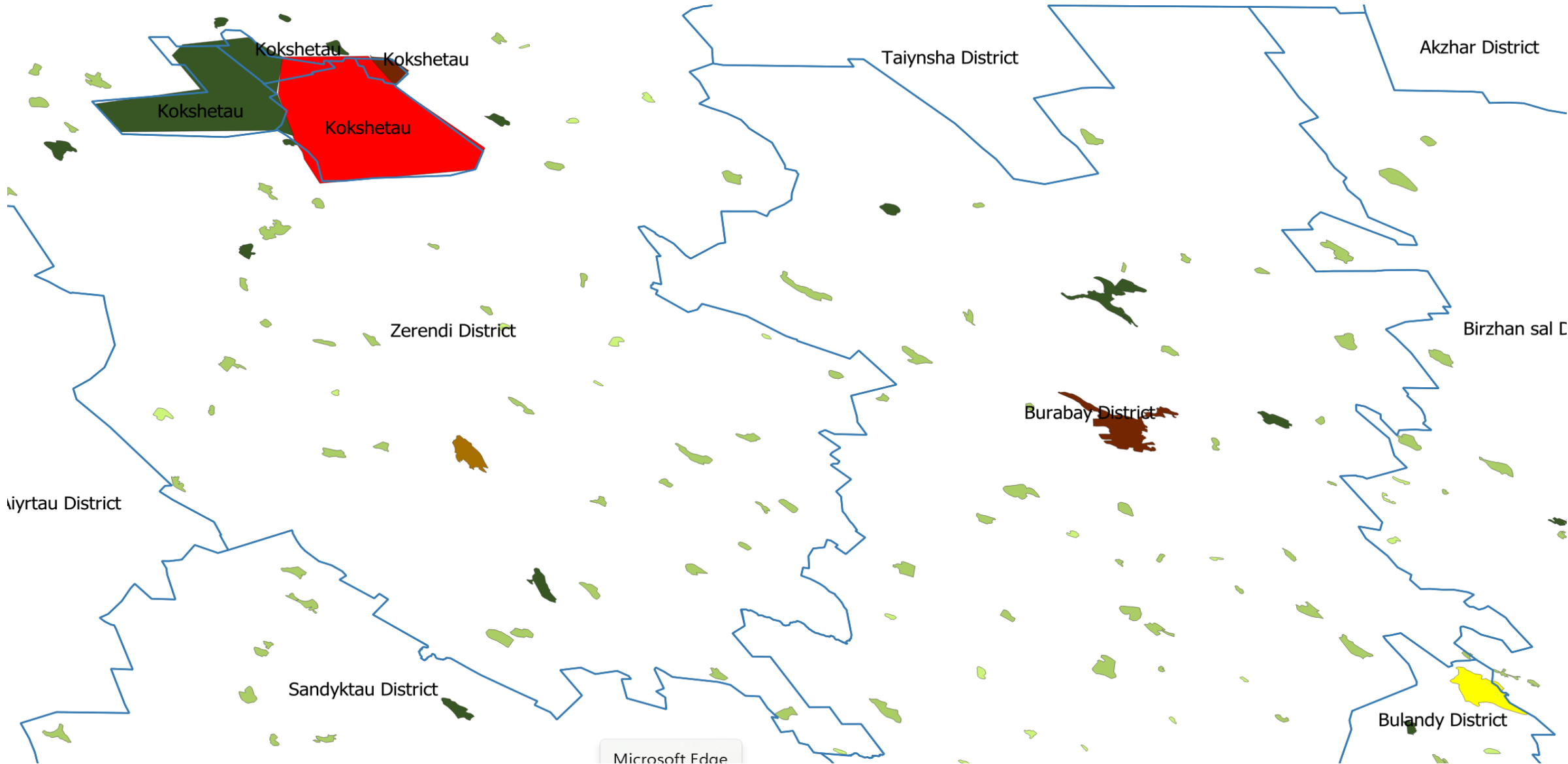
Classification of settlements

<i>Urban area</i>	<i>Cities + towns and semi-dense areas</i>
<i>Cities</i>	<i>>= 50% population in the city center</i>
<i>Dense towns</i>	<i>A large part of the population lives in the dense urban cluster</i>
<i>Semi-dense towns</i>	<i>A large part of the population lives in the semi-dense urban cluster</i>
<i>Suburbs</i>	<i>>= 50% population in a suburb cell cluster</i>
<i>Villages</i>	<i>A large part of the population lives in the rural cluster</i>
<i>Dispersed rural areas</i>	<i>A large part of the population lives rural grid cells with low density</i>
<i>Mostly uninhabited areas</i>	<i>A large part of the population lives rural grid cells with very low density</i>

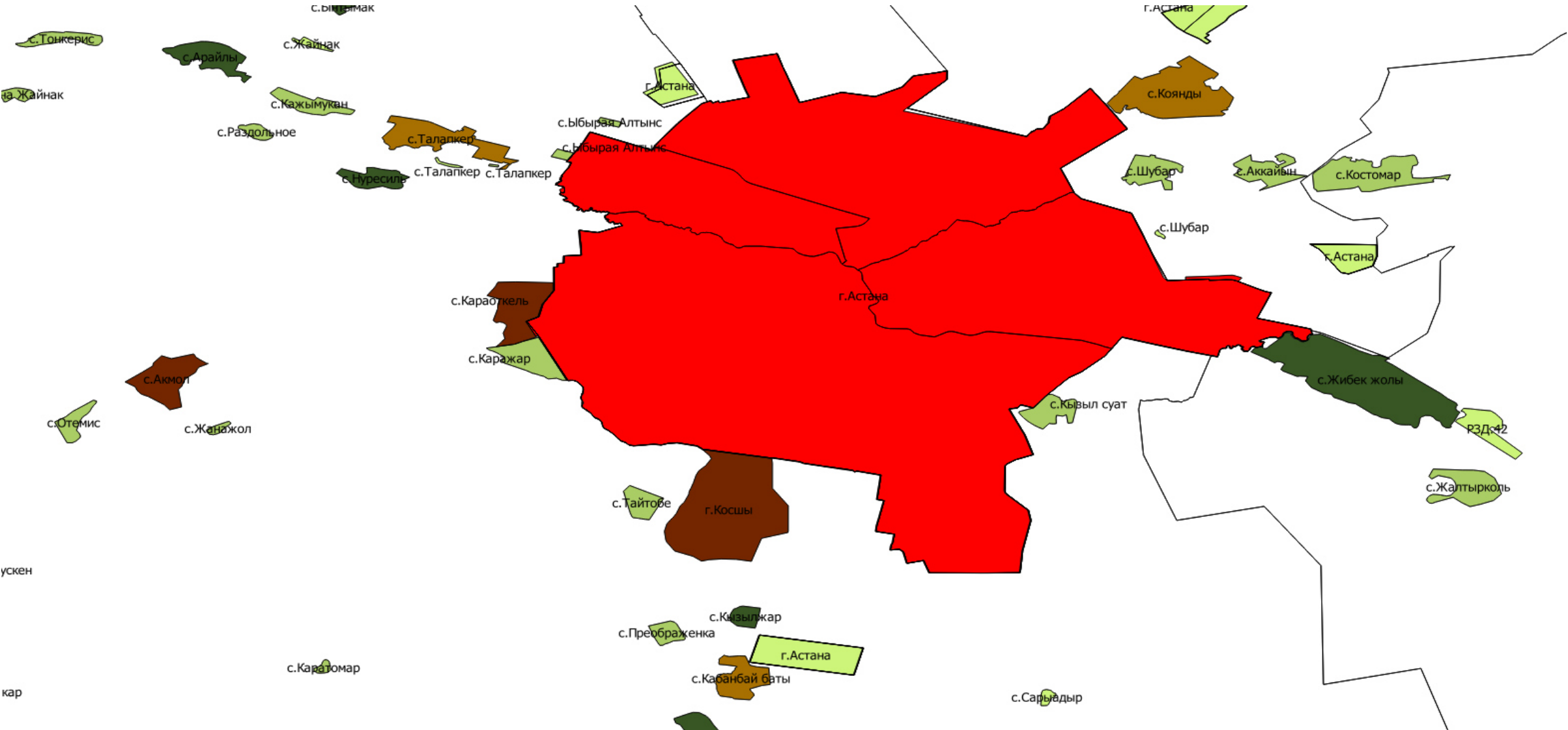
Classification of settlements in the Akmola region



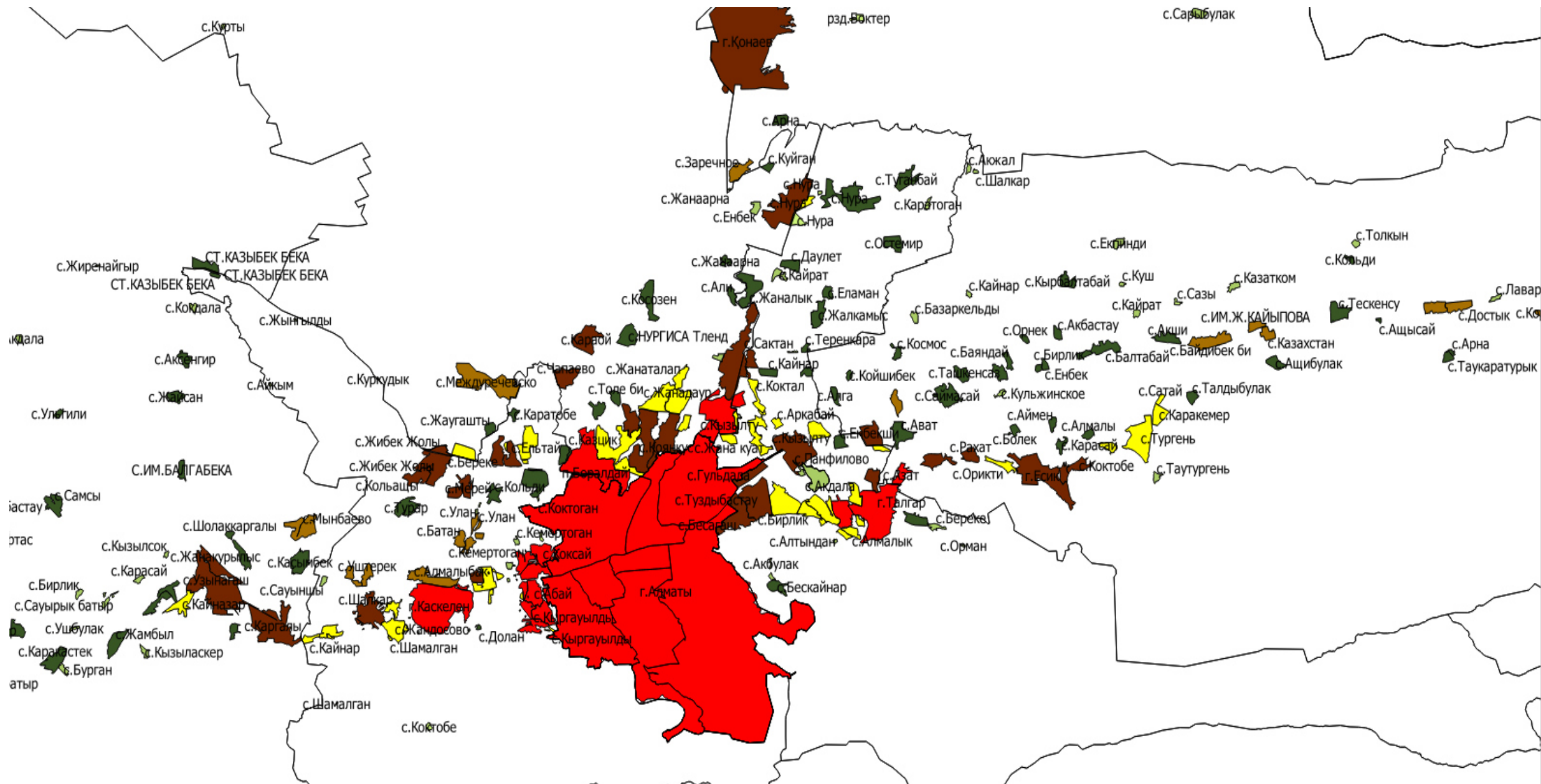
Classification of settlements in the Kokshetau c.a.



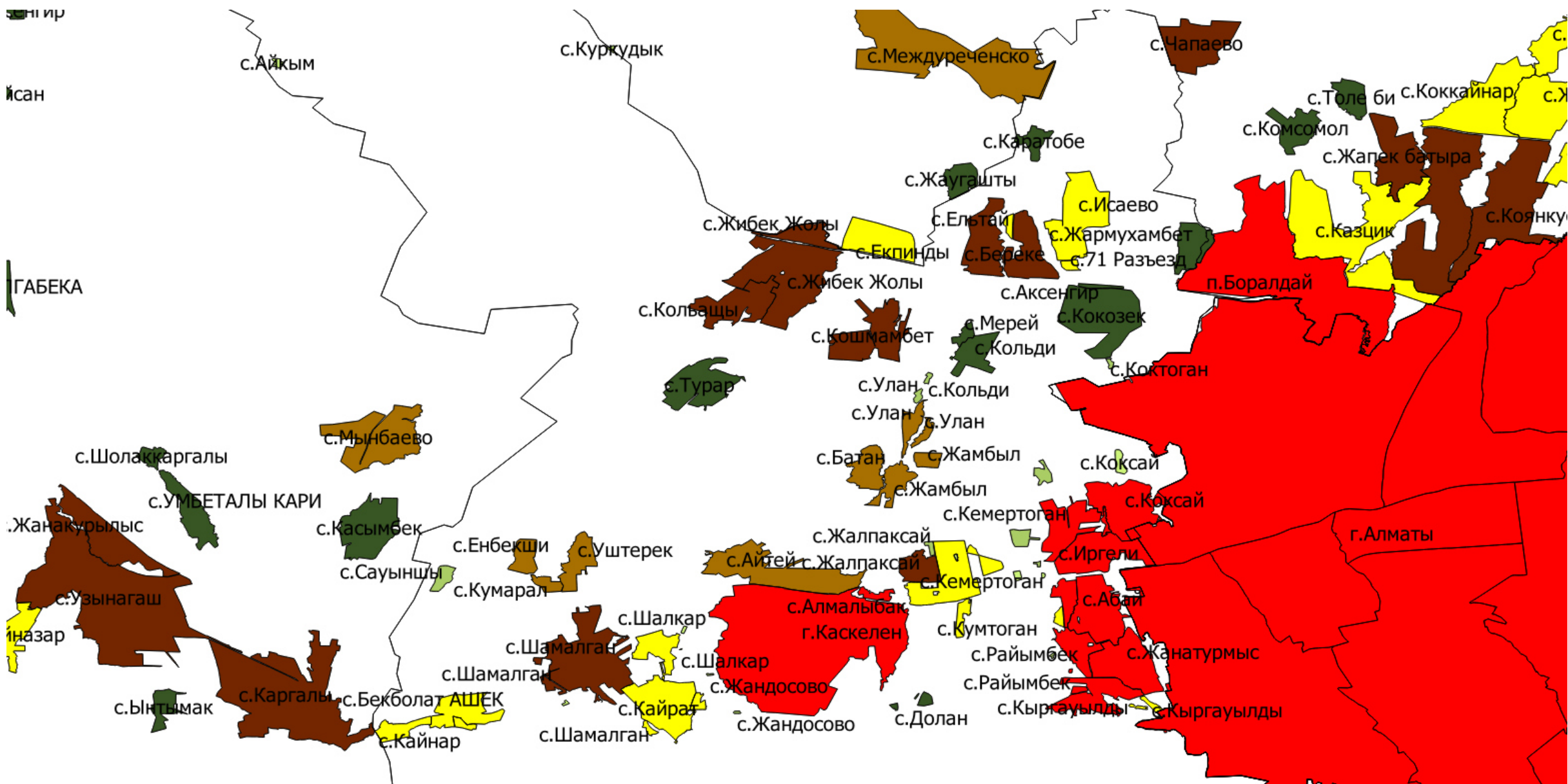
Classification of settlements in the Akmola region



Classification of settlements in the Almaty region

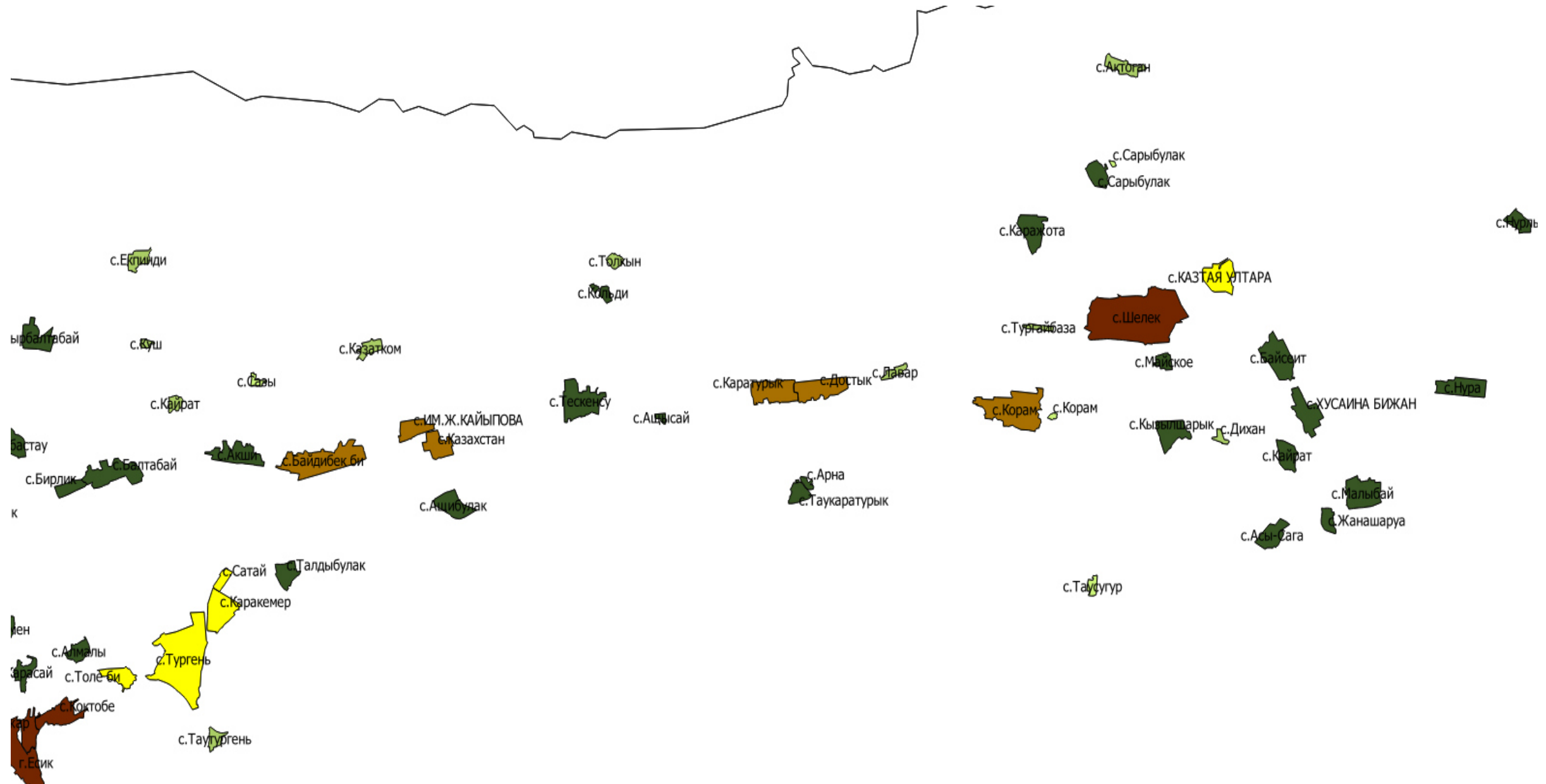


Classification of settlements in the Almaty region

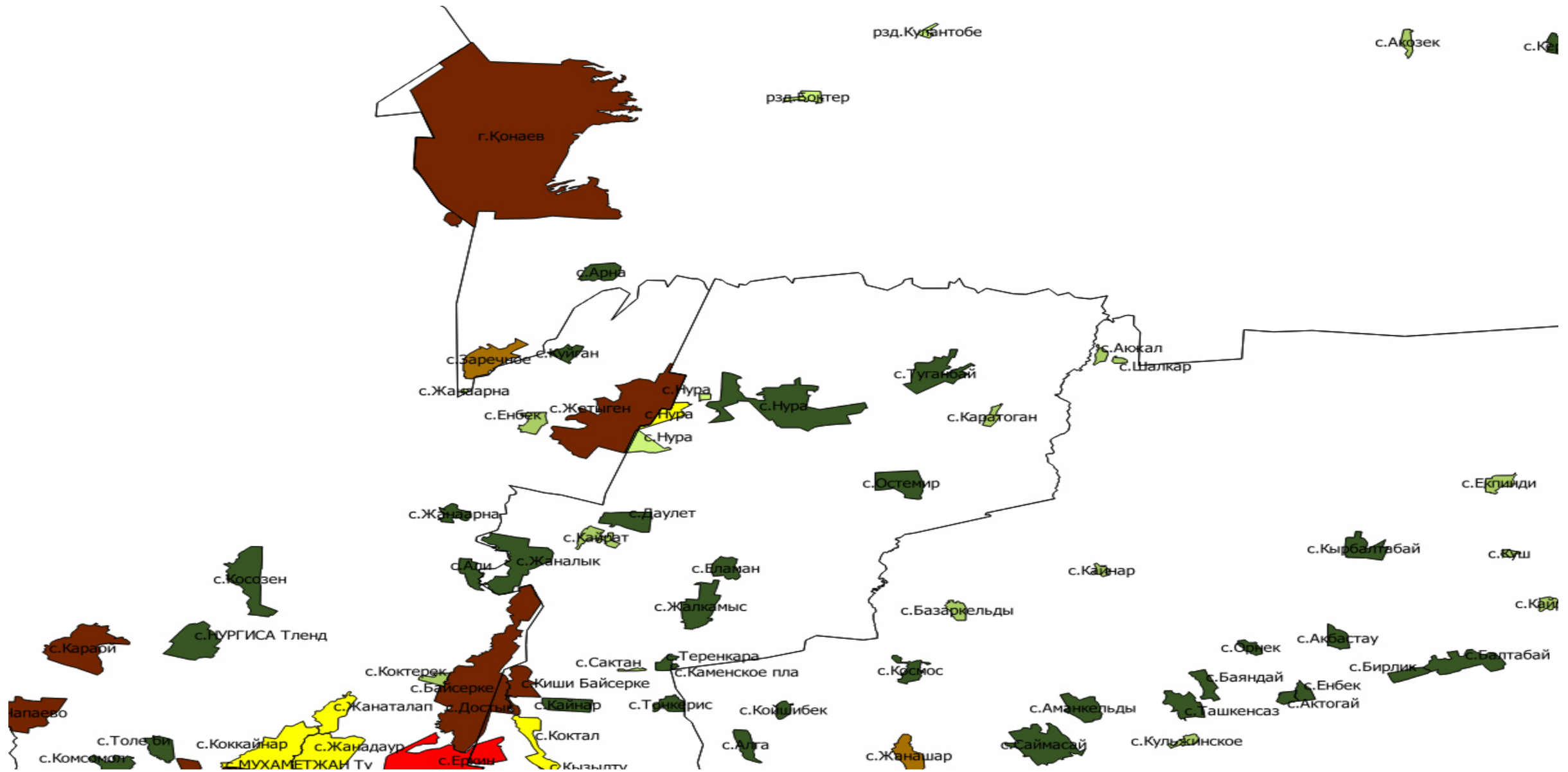


[illegible]

Classification of settlements in the Almaty region



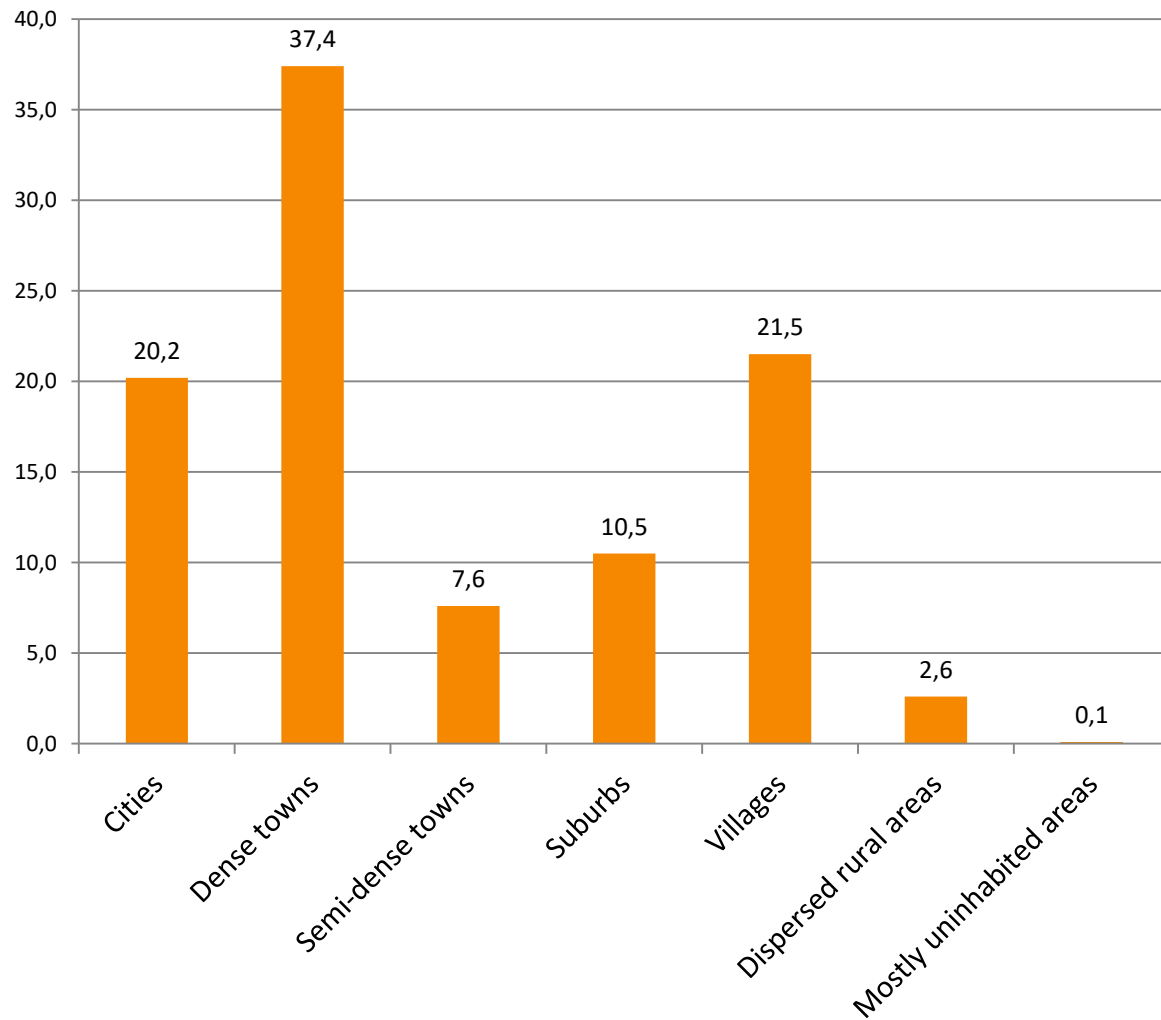
Classification of settlements in the Almaty region



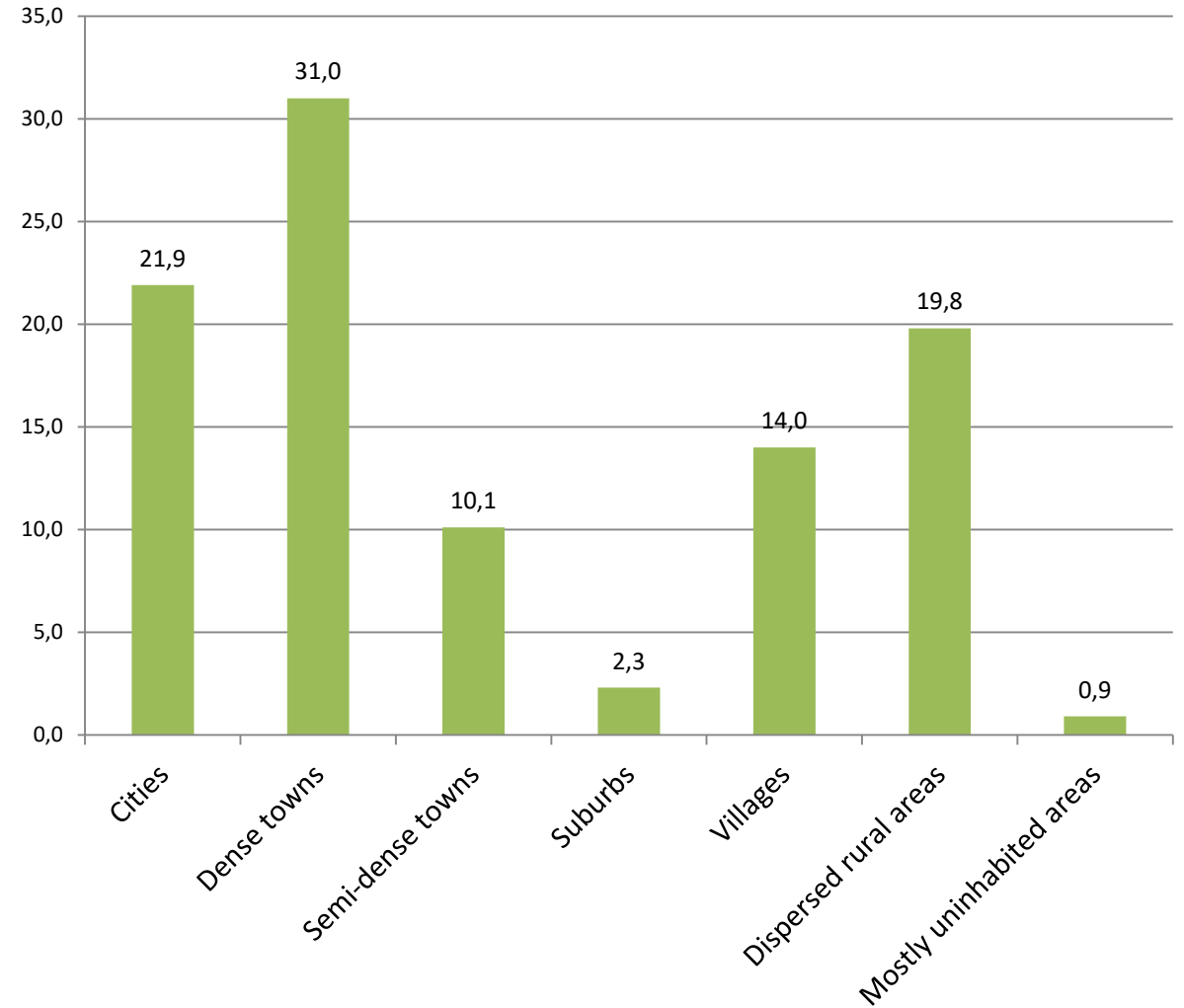
[illegible][illegible]

Percentage of the population by type of settlement

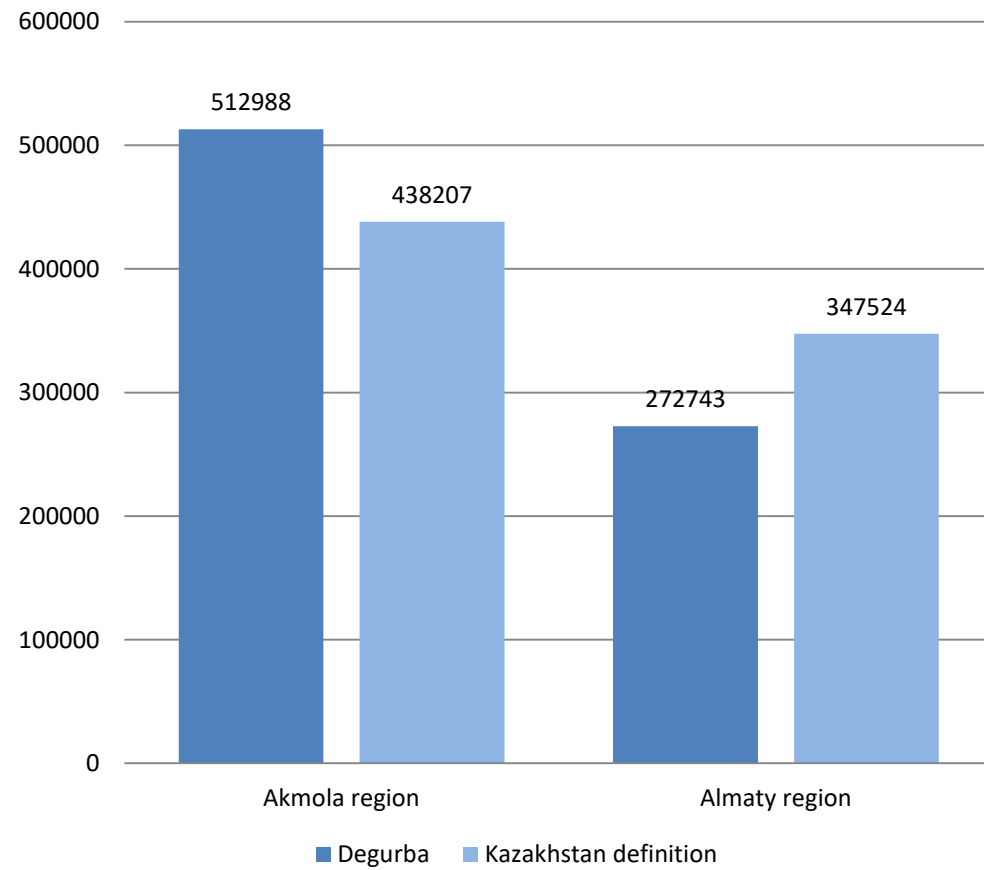
Almaty region



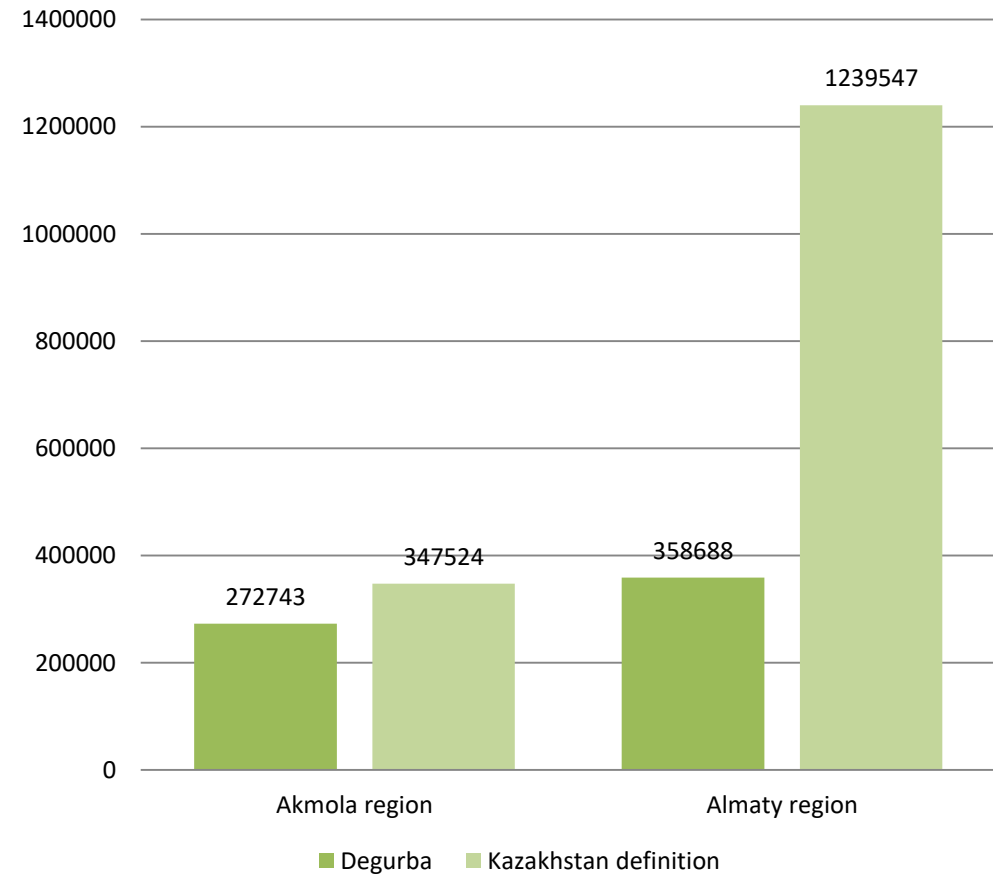
Akmola region



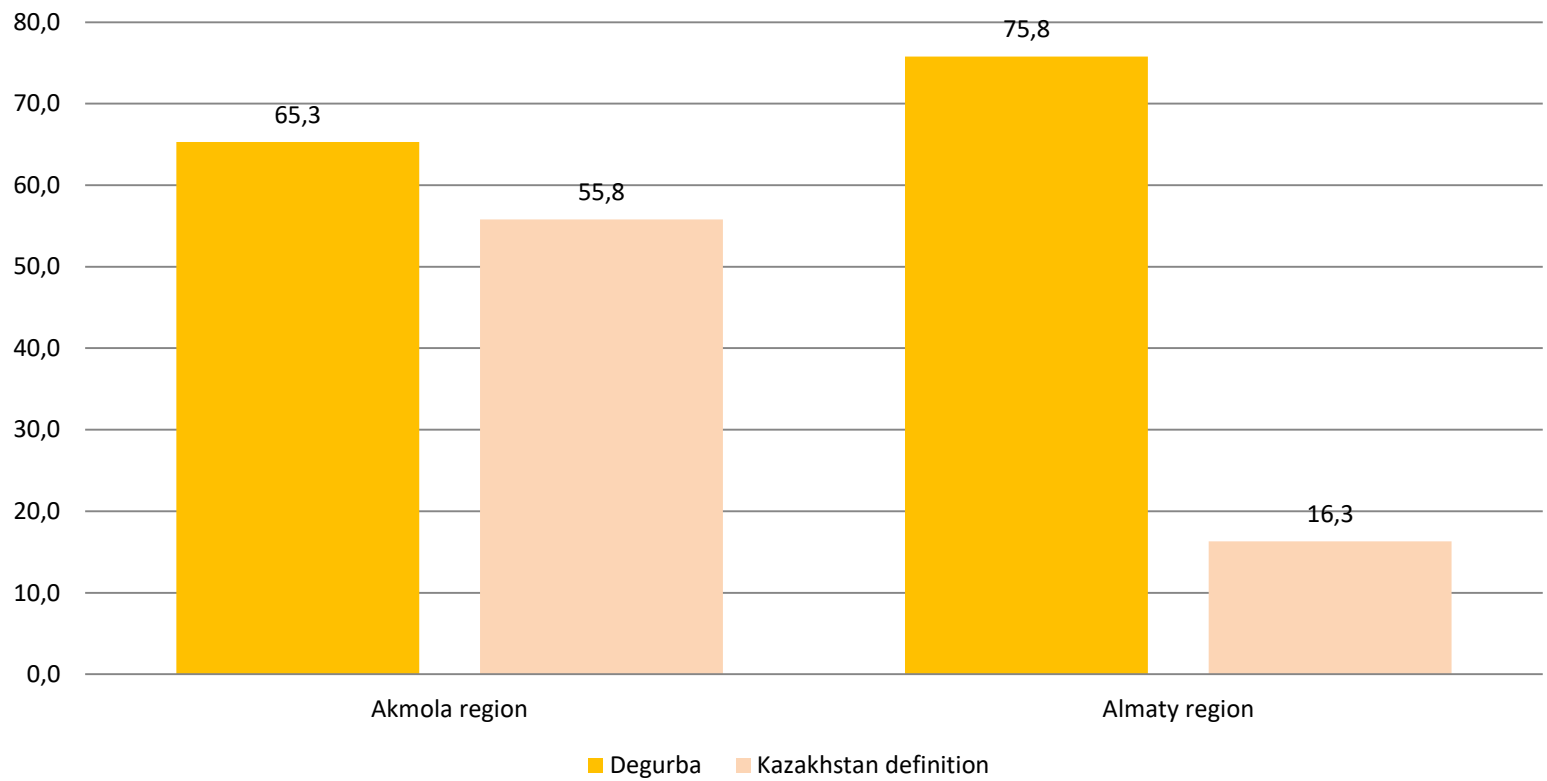
Urban area



Rural area



Degree of urbanisation



Dense towns of Akmola region

Locality	Area	Population
Atbasar c.	Atbasar district	31324
Akkol c.	Akkol district	16048
Stepnogorsk c.	Stepnogorsk c.a.	49783
Ereymantau c.	Ereymantau district	12582
Shchuchinsk c.	Burabay district	47512
Karaotkel v.	Korgalzhyn district	9884
Kosshy c.	Kosshy c.a.	48985
Akmol v.	Korgalzhyn district	13544
Stantsionny s.	Kokshetau c.a.	13669

Semi-dense towns of Akmola region

Locality	Area	Population
Astrakhanka v.	Astrakhan district	6082
Zerendi v.	Zerendi district	7167
Esil c.	Esil district	11432
Derzhavin c.	Zharkain district	7070
Arshaly s.	Arshaly district	7946
Bestobe s.	Stepnogorsk c.a.	5985
Shortandy s.	Shortandy district	6558
Stepnoe v.	Shortandy district	1329
Talapker v.	Tselinograd district	8031
Koyandy v.	Tselinograd district	9687
Kabanbay batyr v.	Tselinograd district	8001

Suburbs of Akmola region

Locality	Area	Population
Makinsk c.	Bulandy district	18054

Cities of Almaty region

Locality	Area	Population	City center
Azat v.	Enbekshikazakh district	4941	Talgar c.
Boralday s.	Ile district	36599	Almaty c.
Pokrovka v.	Ile district	5156	Almaty c.
Otegen batyr v.	Ile district	32122	Almaty c.
Abai v.	Karasay district	8463	Almaty c.
Kemertogan v.	Karasay district	5770	Almaty c.
Koksay v.	Karasay district	10696	Almaty c.
Bulakty v.	Karasay district	3682	Almaty c.
Zhanaturmys v.	Karasay district	4554	Almaty c.
Irgely v.	Karasay district	16856	Almaty c.
Raymbek v.	Karasay district	6038	Almaty c.
Kyrgauyldy v.	Karasay district	8708	Almaty c.
Talgar c.	Talgar district	64372	Almaty c.
Erkyn v.	Talgar district	2758	Almaty c.
Kyzylkairat v.	Talgar district	8379	Talgar c.
Kaskelen c.	Kaskelen c.a.	80711	Kaskelen c.

Dense towns of Almaty region

Locality	Area	Population		Locality	Area	Population
Konayev c.	Konayev c.a.	54662		Guldala v.	Talgar district	9118
Kainazar v.	Enbekshikazakh district	9536		Besagash v.	Talgar district	16948
Esik c.	Enbekshikazakh district	41316		Dostyk v.	Talgar district	359
Baiterek v.	Enbekshikazakh district	11239		Tuzdybastau v.	Talgar district	22080
Koktobe v.	Enbekshikazakh district	4254		Kendala v.	Talgar district	17329
Shelek v.	Enbekshikazakh district	29316		Kyshy Baiserke v.	Talgar district	1976
Rahat v.	Enbekshikazakh district	9676		Panfilov v.	Talgar district	14086
Kyzylzhar v.	Enbekshikazakh district	4559		Shongzhy v.	Uygur district	22219
Zhanakurylys v.	Zhambyl district	5894		Tuymebayev v.	Ile district	21311
Uzynagash v.	Zhambyl district	47012		Koyankus v.	Ile district	6536
Kargaly v.	Zhambyl district	31640		Zhetygen v.	Ile district	20709
Zhalpaksay v.	Karasay district	7701		Karaoy v.	Ile district	9587
Bereke v.	Karasay district	6894		Zhapek batyr v.	Ile district	12702
Yeltay v.	Karasay district	3000		Chapayev v.	Ile district	10742
Shamalgan v.	Karasay district	29287		Baiserke v.	Ile district	26830
Kolashy v.	Karasay district	6581				
Koshmambet v.	Karasay district	8184				
Zhibek zholy v.	Karasay district	30838				

Semi-dense towns of Almaty region

Locality	Area	Population
Zhanashar v.	Enbekshikazakh district	5717
Kazakhstan v.	Enbekshikazakh district	3984
Baidybek bi v.	Enbekshikazakh district	10765
Dostyk v.	Enbekshikazakh district	3374
Zh. Kaypov v.	Enbekshikazakh district	2564
Koram v.	Enbekshikazakh district	6553
Karaturyk v.	Enbekshikazakh district	3790
Mynbayev v.	Zhambyl district	5428
Mezhdurechenko v.	Ile district	12008
Zhambyl v.	Karasay district	4447
Aitey v.	Karasay district	7061
Batan v.	Karasay district	2931
Kumaral v.	Karasay district	1365
Ulan v.	Karasay district	3200
Ushterek v.	Karasay district	4098
Narynkol v.	Raiymbek district	6171
Tumenbay v.	Kegen district	276
Kegen v.	Kegen district	8783
Zarechnoe v.	Konayev c.a.	5467
Bakanas v.	Balkhash district	6296
Sharyn v.	Uygur district	6237
Enbekshy v.	Karasay district	2602

Suburbs of Almaty region

Locality	Area	Population		Locality	Area	Population
Kaztai Ultar v.	Enbekshikazakh district	2658		Akdala v.	Talgar district	1745
Karakemer v.	Enbekshikazakh district	6502		Aktas v.	Talgar district	1944
Orikty v.	Enbekshikazakh district	4478		Almalyk v.	Talgar district	1056
Satay v.	Enbekshikazakh district	920		Amangeldy v.	Talgar district	1025
Tole bi v.	Enbekshikazakh district	2803		Arkabay v.	Talgar district	1272
Turgen v.	Enbekshikazakh district	14026		Baibulak v.	Talgar district	566
Kainazar v.	Zhambyl district	7599		Belbulak v.	Talgar district	9294
71 Razyezd v.	Karasay district	912		Birlik v.	Talgar district	3289
Almalybak v.	Karasay district	4744		Zhana kuat v.	Talgar district	1039
Bekbolat Ashek v.	Karasay district	5246		Karabylak v.	Talgar district	4935
Yeltay v.	Karasay district	102		Koktal v.	Talgar district	2400
Zhandosov v.	Karasay district	6688		Kyzyltu v.	Talgar district	8900
Isayev v.	Karasay district	3792		Taldybulak v.	Talgar district	5629
Kainar v.	Karasay district	1873		Shymbulak v.	Talgar district	635
Kairat v.	Karasay district	360		Yekpyndy v.	Ile district	3809
Kumtogan v.	Karasay district	614		Zhanadaur v.	Ile district	5061
Kyrgauyldy v.	Karasay district	200		Zhanatalap v.	Ile district	2829
Raymbek v.	Karasay district	1000		Kazcyk v.	Ile district	14889
Sauynshy v.	Karasay district	358		Karasu v.	Ile district	2298
Shalkar v.	Karasay district	4224		Kokkainar v.	Ile district	8605
				Yntymak v.	Ile district	4558