

# Transport in the Republic of Kazakhstan

Date of publication: 12.06.2026

Date of next publication: 13.07.2026

## [1. Key points](#)

## [2. Transport dynamics](#)

## [3. Glossary](#)

## [4. Methodological explanations](#)

## [5. Links to related publications](#)

## [6. Useful links](#)

## 1. Key points

### Transportation of goods and passengers by all modes of transport

The Physical volume index of the services of the section "Transport and warehousing" in January-May 2026 compared to the corresponding period last year amounted to 108,4%.

In January-May 2026, the republic's transport transported 382,1 million tons of cargo which is 2% more than the level of January-May 2025.

Cargo turnover during this period amounted to 213,3 billion t-km (decreased of 7% compared to January-May 2025).

822,3 million passengers were transported (6,6% more than in January-May 2025).

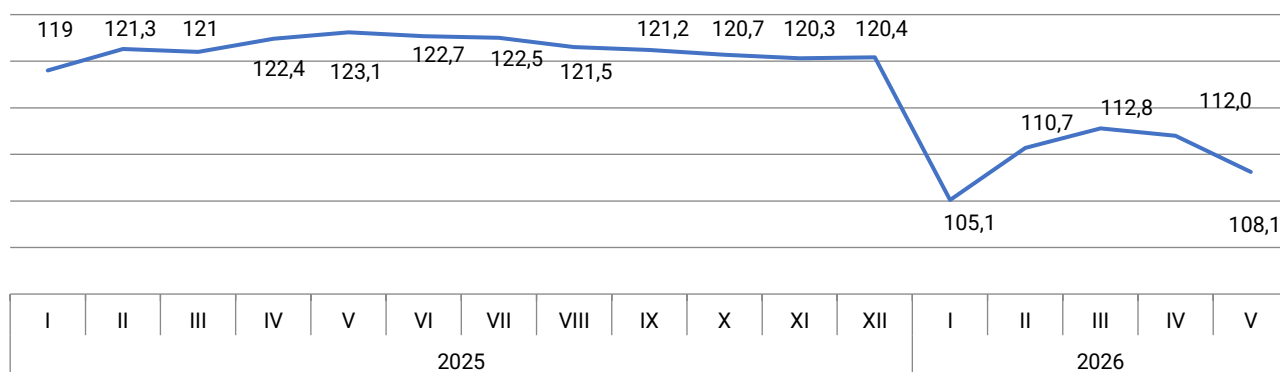
Passenger turnover amounted to 36,7 billion p-km (increased by 4,1% compared to January-May 2025).

Regionally in January-May 2026, decreased in cargo turnover is noted in Astana (7,3%), Shymkent (5%), Almaty city (2,4%), Kostanay (13,8%), Zhambyl (13,2%), Shygys Kazakhstan (12,1%), Karagandy (11%), Akmola (10,9%), Almaty (10%), Soltustik Kazakhstan (9,9%), Pavlodar (9,6%), Atyrau (8,4%), Ulytau (6,6%), Kyzylorda (6,4%), Aktobe (6%), Mangystau (3,9%), Batys Kazakhstan (3,3%), Abay (1,9%) and Turkistan (0,7%) regions.

Passenger turnover increased in the following cities: Almaty city (22,2%), Shymkent (18,7%), Kostanay (60,3%), Akmola (21,3%), Almaty (15,4%), Karagandy (15,3%), Zhetisu (14%), Zhambyl (12,2%), Soltustik Kazakhstan (7,7%), Batys Kazakhstan (7,5%), Abay (3,3%) and Aktobe (3,2%) regions.

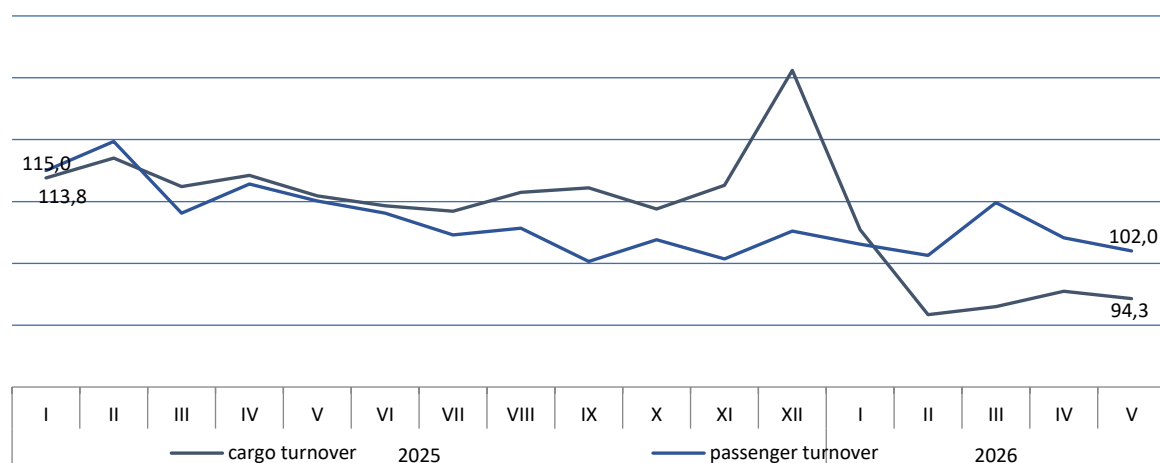
### Physical volume index "Transport and warehousing"

as a percentage of the corresponding period of the previous year



## Cargo and passenger turnover of the Republic of Kazakhstan

as a percentage of the corresponding month of the previous year



## Cargo and passenger turnover for January-May 2026

as a percentage

	Cargo turnover	Passenger turnover
<b>Republic of Kazakhstan</b>	93,0	104,1
Abay	98,1	103,3
Akmola	89,1	121,3
Aktobe	94,0	103,2
Almaty	90,0	115,4
Atyrau	91,6	54,1
Batys Kazakhstan	96,7	107,5
Zhambyl	86,8	112,2
Zhetisu	105,8	114,0
Karagandy	89,0	115,3
Kostanay	86,2	160,3
Kyzylorda	93,6	99,8
Mangystau	96,1	90,1
Pavlodar	90,4	96,3
Soltustik Kazakhstan	90,1	107,7
Turkistan	99,3	98,7
Ulytau	93,4	89,4
Shygys Kazakhstan	87,9	88,2
Astana city	92,7	94,2
Almaty city	97,6	122,2
Shymkent city	95,0	118,7

### Railway transport

In January-May 2026, 135,7 million tons of cargo were transported by rail in the republic which is 1,8% below than the level of January-May 2025, cargo turnover during this period amounted to 123,4 billion t-km (decreased by 11,1% compared to January-May 2025), 7,5 million passengers were transported (3,4% less than in January-May 2025), passenger turnover amounted to 6 billion p-km (decreased by 3,4% compared to January-May 2025).

### Automobile and urban electric transport

In January-May 2026, compared to the same period last year there was an increase in cargo transportation by 9,7% and cargo turnover of road transport increase by 5,4%. Passenger transportation and passenger turnover also increased by 6,8% and 3,7%, respectively.

### Pipeline transport

In January-May 2026, 106,5 million tons of cargo were transported (2,4% less than in January-May 2025), cargo turnover amounted to 70 billion t-km (decreased by 3,6% compared to January-May 2025).

### Air transport

In January-May 2026, 5,8 million passengers were transported by air transport of the republic (increased by 1,7% compared to January-May 2025), passenger turnover amounted to 12 billion p-km (increased by 7% compared to January-May 2025).

### Inland water transport

In January-May 2026, 69,4 thousand tons of cargo were transported by inland water transport, an increase of 5,1 times compared to January-May 2025.

### Marine and coastal transport

In January-May 2026, 1751,6 thousands tons of cargo were transported by sea, there is an increase in cargo transportation by 9,5% compared to January-May 2025, cargo turnover amounted to 879,6 million tons-km and increased by 17,6% compared to January-May 2025.

### Spreadsheets

[The main indicators of transport in the Republic of Kazakhstan](#)

## **2. Transport dynamics**

### **Dynamic tables:**

[The main indicators of transport operation in the Republic of Kazakhstan period and month](#)

[Gross output and PVI in the Transport and Warehousing section](#)

## **3. Glossary**

Transported cargo – the amount of cargo in tons transported by transport.

Cargo turnover of transport– the volume of work of transport for the transportation of goods, expressed in ton-kilometers. It is defined as the sum of the products of the weight of each batch (shipment) of the transported cargo over the distance of its transportation.

Transported passengers – the number of passengers transported over a certain period of time. The unit of observation in passenger transportation statistics is a passenger-trip.

Passenger turnover of transport – the volume of work of transport for the transportation of passengers, The unit of measurement is the passenger-kilometer, i.e. the movement of 1 passenger over a distance of 1 kilometer. It is determined by summing the products of the number of passengers of each carriage by the distance of carriage in kilometers.

The physical volume index- is a relative indicator that characterizes the change in the quantitative volumes of freight and passenger traffic in the reporting period compared to the base period and is calculated on the basis of the weighted average growth rate of revenue from the transportation of goods and passengers.

## **4. Methodological explanations**

The release provides statistical data on the work of enterprises with the main type of activity - transport (OKED code 49-51), reporting on the monthly form 1-transport, enterprises of other sectors of the economy engaged in the transportation of passengers and cargo on a commercial basis, as well as individual entrepreneurs engaged in the transportation of goods and passengers by road on a commercial basis, reporting according to quarterly forms: 1-sole proprietor (auto cargo), 1-sole proprietor (auto passengers).

## 5. Useful links

[Methodology for the formation of transport statistics indicators](#)

[Form 1-Transport "Transport Performance Report"](#)

[Main indicators of transport performance, Quality Report, 2018.](#)

[Transport performance indicators, Information and analytical system "Taldau"](#)

---

<b>Responsible for release:</b> Department of Services and Energy Statistics	<b>Director of the Department:</b> G.Aigozina Tel,+7 7172 749060	<b>Executor:</b> Sh.Shukerbaeva Tel, +7 7172 749271 E-mail: sh.shukerbaeva@aspire.gov.kz	<b>Address:</b> 010000, Astana city Mangilik el avenue, 8 House of Ministries, Entrance 4
--	--	--	--

---

© Bureau of National Statistics of the Agency for Strategic Planning and Reforms of the Republic of Kazakhstan

Қазақстан Республикасының Стратегиялық Жоспарлау және Қайта Реттеу Агендігінің Ұлттық Статистика Бюросы