

# Transport in the Republic of Kazakhstan

Date of publication: 12.05.2026  
Date of next publication: 12.06.2026

- [1. Key points](#)
- [2. Transport dynamics](#)
- [3. Glossary](#)
- [4. Methodological explanations](#)
- [5. Links to related publications](#)
- [6. Useful links](#)

## 1. Key points

### Transportation of goods and passengers by all modes of transport

The PVI of the services of the section "Transport and warehousing" in January-April 2026 compared to the corresponding period last year amounted to 112%.

In January-April 2026, the republic's transport transported 309,6 million tons of cargo which is 3,7% more than the level of January-April 2025.

Cargo turnover during this period amounted to 170,7 billion t-km (decreased of 6,8% compared to January-April 2025).

661,2 million passengers were transported (8,7% more than in January-April 2025).

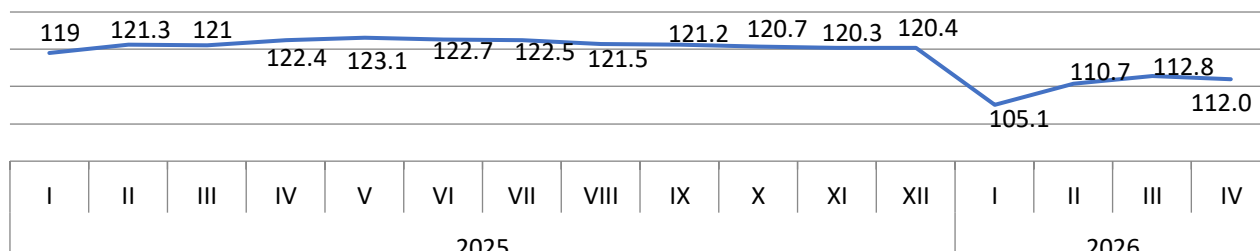
Passenger turnover amounted to 29,1 billion p-km (increased by 4,6% compared to January-April 2025).

Regionally in January-April 2026, decreased in cargo turnover is noted in Astana (6,9%), Shymkent (3,6%), Almaty city (3,4%), Kostanay (15,6%), Zhambyl (14,1%), Shygys Kazakhstan (13,5%), Karagandy (12%), Akmola (11,4%), Almaty (10,6%), Atyrau (10,6%), Soltustik Kazakhstan (10,1%), Kyzylorda (8,8%), Aktobe (5,8%), Ulytau (5,2%), Mangystau (4,3%), Batys Kazakhstan (2,6%) and Abay (1,4%) regions.

Passenger turnover increased in the following cities: Shymkent (26%), Almaty city (21,9%), Kostanay (59,6%), Akmola (24,1%), Zhambyl (19,9%), Karagandy (18,3%), Almaty (17,2%), Zhetisu (16,7%), Batys Kazakhstan (5,1%), Soltustik Kazakhstan (4,7%), Abay (4,5%), Turkistan (2%), Kyzylorda (1,7%) and Aktobe (1,5%) regions.

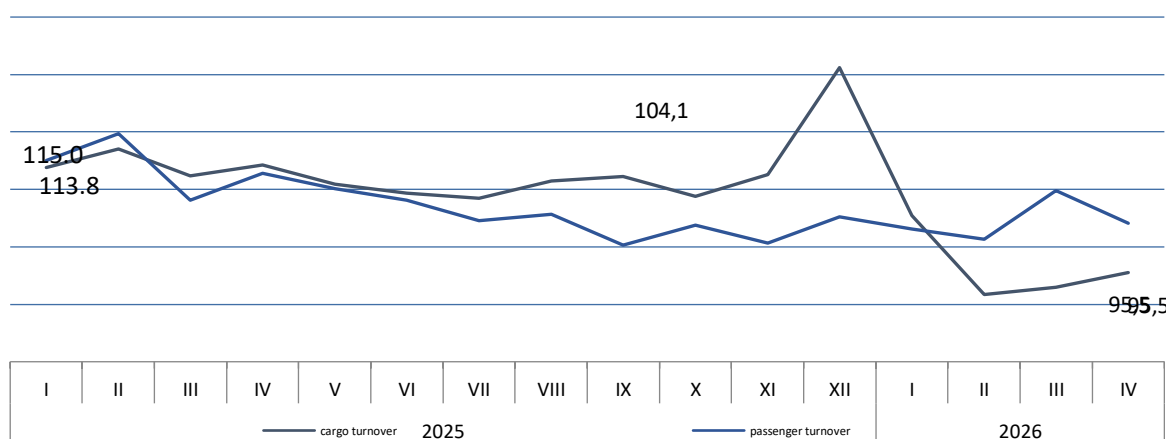
### Physical volume index "Transport and warehousing"

as a percentage of the corresponding period of the previous year



### Cargo and passenger turnover of the Republic of Kazakhstan

as a percentage of the corresponding month of the previous year



### Cargo and passenger turnover for January-April 2026

	as a percentage	
	Cargo turnover	Passenger turnover
<b>Republic of Kazakhstan</b>	93,2	104,6
Abay	98,6	104,5
Akmola	88,6	124,1
Aktobe	94,2	101,5
Almaty	89,4	117,2
Atyrau	89,4	54,3
Batys Kazakhstan	97,4	105,1
Zhambyl	85,9	119,9
Zhetisu	106,8	116,7
Karagandy	88,0	118,3
Kostanay	84,4	159,6
Kyzylorda	91,2	101,7
Mangystau	95,7	89,4
Pavlodar	101,6	97,0
Soltustik Kazakhstan	89,9	104,7
Turkistan	101,5	102,0
Ulytau	94,8	91,6
Shygys Kazakhstan	86,5	88,7
Astana city	93,1	93,9
Almaty city	96,6	121,9
Shymkent city	96,4	126,0

#### Railway transport

In January-April 2026, 110,3 million tons of cargo were transported by rail in the republic which is 1,1% below than the level of January-April 2025, cargo turnover during this period amounted to 99,8 billion t-km (decreased by 10,3% compared to January-April 2025), 6,0 million passengers were transported (3,1% less than in January-April 2025), passenger turnover amounted to 4,7 billion p-km (decreased by 0,2% compared to January-April 2025).

#### Automobile and urban electric transport

In January-April 2026, compared to the same period last year there was an increase in cargo transportation by 15,5% and cargo turnover of road transport increase by 8,2%. Passenger transportation and passenger turnover also increased by 8,9% and 3,5%, respectively.

#### Pipeline transport

In January-April 2026, 84,8 million tons of cargo were transported (3,3% less than in January-April 2025), cargo turnover amounted to 55,2 billion t-km (decreased by 4% compared to January-April 2025).

#### Air transport

In January-April 2026, 4,5 million passengers were transported by air transport of the republic (increased by 2,7% compared to January-April 2025), passenger turnover amounted to 9,5 billion p-km (increased by 9,1% compared to January-April 2025).

#### Marine and coastal transport

In January-April 2026, 1 363,0 thousands tons of cargo were transported by sea, there is an increase in cargo transportation by 4,2% compared to January-April 2025, cargo turnover amounted to 675,5 million tons-km and increased by 9,3% compared to January-April 2025.

#### Spreadsheets

[The main indicators of transport in the Republic of Kazakhstan](#)

## **2.Transport dynamics**

#### **Dynamic tables:**

[The main indicators of transport operation in the Republic of Kazakhstan period and month](#)

[Gross output and PVI in the Transport and Warehousing section](#)

### **3. Glossary**

Transported cargo – the amount of cargo in tons transported by transport.

Cargo turnover of transport – the volume of work of transport for the transportation of goods, expressed in ton-kilometers. It is defined as the sum of the products of the weight of each batch (shipment) of the transported cargo over the distance of its transportation.

Transported passengers – the number of passengers transported over a certain period of time. The unit of observation in passenger transportation statistics is a passenger-trip.

Passenger turnover of transport – the volume of work of transport for the transportation of passengers, The unit of measurement is the passenger-kilometer, i.e. the movement of 1 passenger over a distance of 1 kilometer. It is determined by summing the products of the number of passengers of each carriage by the distance of carriage in kilometers.

The physical volume index- is a relative indicator that characterizes the change in the quantitative volumes of freight and passenger traffic in the reporting period compared to the base period and is calculated on the basis of the weighted average growth rate of revenue from the transportation of goods and passengers.

### **4. Methodological explanations**

The release provides statistical data on the work of enterprises with the main type of activity - transport (OKED code 49-51), reporting on the monthly form 1-transport, enterprises of other sectors of the economy engaged in the transportation of passengers and cargo on a commercial basis, as well as individual entrepreneurs engaged in the transportation of goods and passengers by road on a commercial basis, reporting according to quarterly forms: 1-sole proprietor (auto cargo), 1-sole proprietor (auto passengers).

### **5. Useful links**

[Methodology for the formation of transport statistics indicators](#)

[Form 1-Transport "Transport Performance Report"](#)

[Main indicators of transport performance, Quality Report, 2018.](#)

[Transport performance indicators, Information and analytical system "Taldau"](#)

<b>Responsible for release:</b> Department of Services and Energy Statistics	<b>Director of the Department:</b> G.Aigozina Tel,+7 7172 749060	<b>Executor:</b> Sh.Shukerbaeva Tel, +7 7172 749771 E-mail: sh.shukerbaeva@aspire.gov.kz	<b>Address:</b> 010000, Astana city Mangilik el avenue, 8 House of Ministries, Entrance 4
--	--	--	---

© Bureau of National Statistics of the Agency for Strategic Planning and Reforms of the Republic of Kazakhstan