

Transport in the Republic of Kazakhstan

Date of publication: 12.03.2026

Date of next publication: 13.04.2026

[1, Key points](#)

[2, Transport dynamics](#)

[3, Glossary](#)

[4, Methodological explanations](#)

[5, Links to related publications](#)

[6, Useful links](#)

[1, Key points](#)

Transportation of goods and passengers by all modes of transport

The PVI of the services of the section "Transport and warehousing" in January-February 2026 compared to the corresponding period last year amounted to 110,7%.

In January-February 2026, the republic's transport transported 163,3 million tons of cargo which is 11,9% more than the level of January-February 2025.

Cargo turnover during this period amounted to 88,6 billion t-km (decreased of 1,3% compared to January-February 2025).

317,4 million passengers were transported (9,8% more than in January-February 2025).

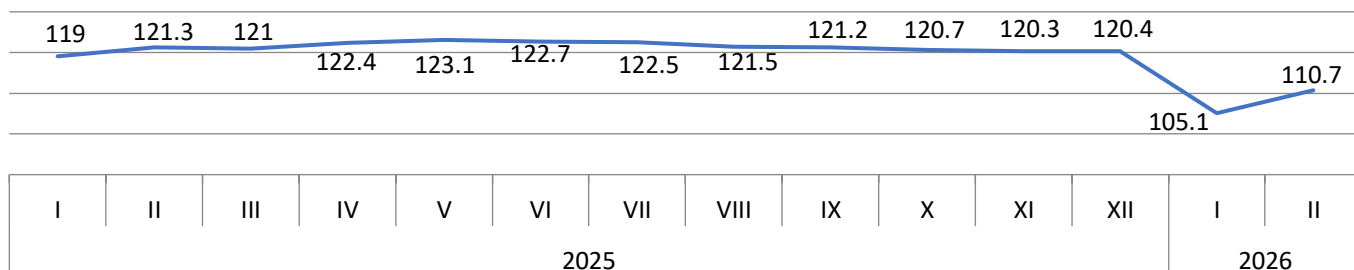
Passenger turnover amounted to 14 billion p-km (increased by 2,2% compared to January-February 2025).

Regionally in January-February 2026, decreased in cargo turnover is noted in Shymkent (12,4%), Almaty city (6,9%), Almaty (19,7%), Atyrau (11,9%), Zhambyl (9,6%), Shygys Kazakhstan (7,2%), Kostanay (7%), Karagandy (4,2%), Akmola (2,6%), Soltustik Kazakhstan (1,6%) and Pavlodar (0,1%) regions.

Passenger turnover increased in the following cities: Shymkent (25,8%), Almaty city (15,5%), Kostanay (51,8%), Zhambyl (27%), Karagandy (22,6%), Akmola (21,7%), Zhetisu (20,8%), Almaty (13,5%), Batys Kazakhstan (9,6%), Abay (5,9%), Turkistan (1,9%), Kyzylorda (1,6%) and Soltustik Kazakhstan (1,4%) regions.

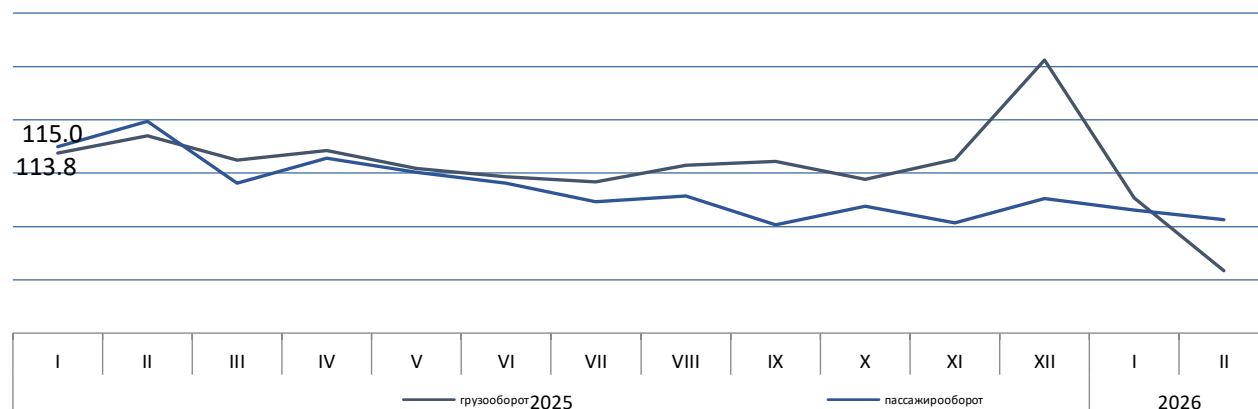
Physical volume index "Transport and warehousing"

as a percentage of the corresponding period of the previous year



Cargo and passenger turnover of the Republic of Kazakhstan

as a percentage of the corresponding month of the previous year



Cargo and passenger turnover for January-February 2026

		asa percentage
	Cargo turnover	Passenger turnover
Republic of Kazakhstan	98,7	102,2
Abay	115,8	105,9
Akmola	97,4	121,7
Aktobe	105,9	92,7
Almaty	80,3	113,5
Atyrau	88,1	51,1
Batys Kazakhstan	106,5	109,6
Zhambyl	90,4	127,0
Zhetisu	128,6	120,8
Karagandy	95,8	122,6
Kostanay	93,0	151,8
Kyzylorda	103,5	101,6
Mangystau	100,2	89,0
Pavlodar	99,9	95,8
Soltustik Kazakhstan	98,4	101,4
Turkistan	128,1	101,9
Ulytau	102,6	93,0
Shygys Kazakhstan	92,8	88,3
Astana city	108,7	92,3
Almaty city	93,1	115,5
Shymkent city	87,6	125,8

Railway transport

In January-February 2026, 62,4 million tons of cargo were transported by rail in the republic which is 14,2% up than the level of January-February 2025, cargo turnover during this period amounted to 54,6 billion t-km (decreased by 0,1% compared to January-February 2025), 3,1 million passengers were transported (4,7% less than in January-February 2025), passenger turnover amounted to 2,3 billion p-km (decreased by 2,7% compared to January-February 2025).

Automobile and urban electric transport

In January-February 2026, compared to the same period last year there was an increase in cargo transportation by 25,5% and cargo turnover of road transport increase by 2,4%. Passenger transportation and passenger turnover also increased by 10% and 0,6%, respectively.

Pipeline transport

In January-February 2026, 40,1 million tons of cargo were transported (6% less than in January-February 2025), cargo turnover amounted to 26,4 billion t-km (decreased by 4,5% compared to January-February 2025).

Air transport

In January-February 2026, 2,2 million passengers were transported by air transport of the republic (increased by 1,1% compared to January-February 2025), passenger turnover amounted to 4,8 billion p-km (increased by 7,3% compared to January-February 2025).

Marine and coastal transport

In January-February 2026, 619,8 thousands tons of cargo were transported by sea, there is an decreased in cargo transportation by 10,8% compared to January-February 2025, cargo turnover amounted to 297,5 million tons-km and decreased by 2,6% compared to January-February 2025.

Spreadsheets

[The main indicators of transport in the Republic of Kazakhstan](#)

2, Transport dynamics

Dynamic tables:

[The main indicators of transport operation in the Republic of Kazakhstan period and month](#)

[Gross output and PVI in the Transport and Warehousing section](#)

3, Glossary

Transported cargo – the amount of cargo in tons transported by transport,

Cargo turnover of transport– the volume of work of transport for the transportation of goods, expressed in ton-kilometers, It is defined as the sum of the products of the weight of each batch (shipment) of the transported cargo over the distance of its transportation,

Transported passengers – the number of passengers transported over a certain period of time, The unit of observation in passenger transportation statistics is a passenger-trip,

Passenger turnover of transport– the volume of work of transport for the transportation of passengers, The unit of measurement is the passenger-kilometer, i.e, the movement of 1 passenger over a distance of 1 kilometer, It is determined by summing the products of the number of passengers of each carriage by the distance of carriage in kilometers,

The physical volume index- is a relative indicator that characterizes the change in the quantitative volumes of freight and passenger traffic in the reporting period compared to the base period and is calculated on the basis of the weighted average growth rate of revenue from the transportation of goods and passengers,

4, Methodological explanations

The release provides statistical data on the work of enterprises with the main type of activity - transport (OKED code 49-51), reporting on the monthly form 1-transport, enterprises of other sectors of the economy engaged in the transportation of passengers and cargo on a commercial basis, as well as individual entrepreneurs engaged in the transportation of goods and passengers by road on a commercial basis, reporting according to quarterly forms: 1-sole proprietor (auto cargo), 1-sole proprietor (auto passengers),

5, Useful links

[Methodology for the formation of transport statistics indicators](#)

[Form 1-Transport "Transport Performance Report"](#)

[Main indicators of transport performance, Quality Report, 2018,](#)

[Transport performance indicators, Information and analytical system "Taldau"](#)

Responsible for release: Department of Services and Energy Statistics	Acting Director of the Department: D.Imanbaev Tel,+7 7172 749060	Executor: B.Kuandikov Tel, +7 7172 749771 E-mail: b.kuandikov@aspire.gov.kz	Address: 010000, Astana city Mangilik el avenue, 8 House of Ministries, Entrance 4
--	---	---	--

© Agency for Strategic Planning and Reforms of the Republic of Kazakhstan Bureau of National Statistics