

# Transport in the Republic of Kazakhstan

Date of publication: 12.09.2025

Date of next publication: 13.10.2025

## [1, Key points](#)

## [2, Transport dynamics](#)

## [3, Glossary](#)

## [4, Methodological explanations](#)

## [5, Links to related publications](#)

## [6, Useful links](#)

## [1, Key points](#)

### Transportation of goods and passengers by all modes of transport

The PVI of the services of the section "Transport and warehousing" in January-August 2025 compared to the corresponding period last year amounted to 121,5%,

In January-August 2025, the republic's transport transported 753 million tons of cargo which is 9,8% more than the level of January-August 2024,

Cargo turnover during this period amounted to 373,7 billion t-km (increased of 12,1% compared to January-August 2024),

1 238,7 million passengers were transported (11,2% more than in January-August 2024),

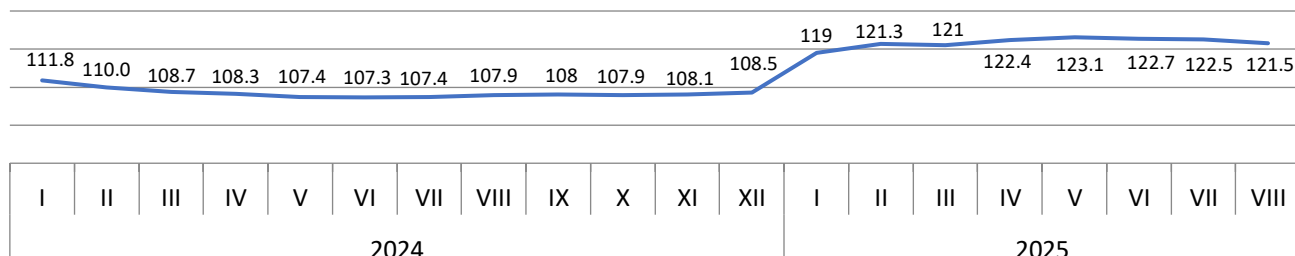
Passenger turnover amounted to 59,8 billion p-km (increased by 10% compared to January-August 2024),

Regionally in January-August 2025, increased in cargo turnover is noted in cities: Astana (15,2%), Almaty (1,5%), Atyrau (47,8%), Zhetisu (41,1%), Abay (30%), Mangystau (28,9%), Turkistan (22,5%), Pavlodar (16,1%), Batys Kazakhstan (10%), Aktope (9%), Kostanay (8,9%), Almaty (8,6%), Karagandy (7,6%), Kyzylorda (3,6%), Soltustik Kazakhstan (1,5%) and Abay(0,4%) regions,

Passenger turnover increased in the following cities: Almaty (26%), Shymkent (26%), Almaty (1,7 times), Turkistan (20%), Kyzylorda (17,4%), Mangystau (16,1%), Abay (15,9%), Karagandy (14,4%), Shygys Kazakhstan (11,3%), Batys Kazakhstan (7,5%), Aktope (6,8%), Zhetisu (5,3%) Atyrau (4,6%) and Pavlodar (3,8%) regions,

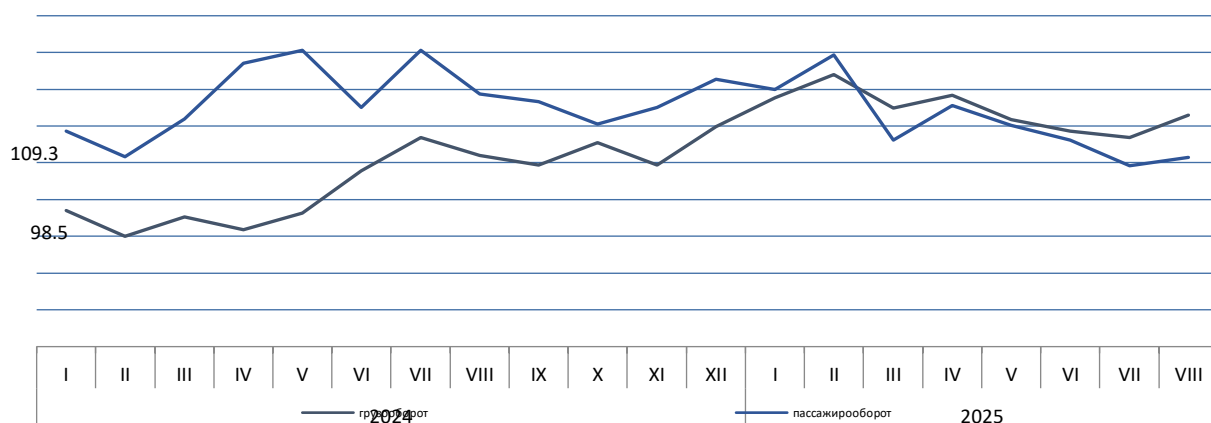
### Physical volume index "Transport and warehousing"

as a percentage of the corresponding period of the previous year



### Cargo and passenger turnover of the Republic of Kazakhstan

as a percentage of the corresponding month of the previous year



### Cargo and passenger turnover for January-August 2025

		asa percentage
	Cargo turnover	Passenger turnover
<b>Republic of Kazakhstan</b>	112,1	110,0
Abay	130,0	115,9
Akmola	98,8	52,0
Aktobe	109,0	106,8
Almaty	108,6	167,7
Atyrau	147,8	104,6
Batys Kazakhstan	110,0	107,5
Zhambyl	91,3	86,4
Zhetisu	141,1	105,3
Karagandy	107,6	114,4
Kostanay	108,9	57,9
Kyzylorda	103,6	117,4
Mangystau	128,9	116,1
Pavlodar	116,1	103,8
Soltustik Kazakhstan	101,5	73,3
Turkistan	122,5	120,0
Ulytau	100,4	87,1
Shygyz Kazakhstan	89,1	111,3
Astana city	115,2	98,8
Almaty city	101,5	126,0
Shymkent city	73,0	126,0

#### Railway transport

In January-August 2025, 300,3 million tons of cargo were transported by rail in the republic which is 11,4% up than the level of January-August 2024, cargo turnover during this period amounted to 225,1 billion, t-km (increased by 7,6% compared to January-August 2024), 13,5 million passengers were transported (6,1% less than in January-August 2024), passenger turnover amounted to 11,0 billion p-km (decreased by 1,7% compared to January-August 2024),

#### Automobile and urban electric transport

In January-August 2025, compared to the same period last year there was an increase in cargo transportation by 1,8% and cargo turnover of road transport increase by 31,5%, Passenger transportation and passenger transportation also increased by 11,5% and 16,5%, respectively,

#### Pipeline transport

In January-August 2025, 228,1 million tons of cargo were transported (16,5% more than in January-August 2024), cargo turnover amounted to 117,4 billion, t-km (increased by 17,1% compared to January-August 2024),

#### Air transport

In January-August 2025, 10,6 million passengers were transported by air transport of the republic (increased by 7,4% compared to January-August 2024), passenger turnover amounted to 20,8 billion p-km (increased by 8,7% compared to January-August 2024),

#### Inland waterway transport

In January-August 2025, 129,6 thousand tons of cargo were transported by inland waterway (decreased by 52,2% compared to January-August 2024), 232,9 thousand passengers were transported (increased by 9,8% compared to January-August 2024),

#### Marine and coastal transport

In January-August 2025, 2 485,5 thousands tons of cargo were transported by sea, there is an increase in cargo transportation by 30,6% compared to January-August 2024, cargo turnover amounted to 1 153,3 million tons-km and increased by 4,3% compared to January-August 2024,

## Spreadsheets

[The main indicators of transport in the Republic of Kazakhstan](#)

## **2. Transport dynamics**

### **Dynamic tables:**

[The main indicators of transport operation in the Republic of Kazakhstan period and month](#)  
[Gross output and PVI in the Transport and Warehousing section](#)

## **3. Glossary**

Transported cargo – the amount of cargo in tons transported by transport,

Cargo turnover of transport– the volume of work of transport for the transportation of goods, expressed in ton-kilometers, It is defined as the sum of the products of the weight of each batch (shipment) of the transported cargo over the distance of its transportation,

Transported passengers – the number of passengers transported over a certain period of time, The unit of observation in passenger transportation statistics is a passenger-trip,

Passenger turnover of transport– the volume of work of transport for the transportation of passengers, The unit of measurement is the passenger-kilometer, i.e, the movement of 1 passenger over a distance of 1 kilometer, It is determined by summing the products of the number of passengers of each carriage by the distance of carriage in kilometers,

The physical volume index- is a relative indicator that characterizes the change in the quantitative volumes of freight and passenger traffic in the reporting period compared to the base period and is calculated on the basis of the weighted average growth rate of revenue from the transportation of goods and passengers,

## **4. Methodological explanations**

The release provides statistical data on the work of enterprises with the main type of activity - transport (OKED code 49-51), reporting on the monthly form 1-transport, enterprises of other sectors of the economy engaged in the transportation of passengers and cargo on a commercial basis, as well as individual entrepreneurs engaged in the transportation of goods and passengers by road on a commercial basis, reporting according to quarterly forms: 1-sole proprietor (auto cargo), 1-sole proprietor (auto passengers),

## **5. Useful links**

[Methodology for the formation of transport statistics indicators](#)

[Form 1-Transport "Transport Performance Report"](#)

[Main indicators of transport performance, Quality Report, 2018,](#)

[Transport performance indicators, Information and analytical system "Taldau"](#)

<b>Responsible for release:</b> Department of Services and Energy Statistics	<b>Director of the Department:</b> M. Misura Tel,+7 7172 749060	<b>Executor:</b> B.Kuandikov Tel, +7 7172 749771 E-mail: b,kuandikov@aspire.gov,kz	<b>Address:</b> 010000, Astana city Mangilik el avenue, 8 House of Ministries, Entrance 4
--	---	---	---

© Agency for Strategic Planning and Reforms of the Republic of Kazakhstan Bureau of National Statistics