

Transport in the Republic of Kazakhstan

Date of publication: 15.07.2025

Date of next publication: 12.08.2025

[1. Key points](#)

[2. Transport dynamics](#)

[3. Glossary](#)

[4. Methodological explanations](#)

[5. Links to related publications](#)

[6. Useful links](#)

[1. Key points](#)

Transportation of goods and passengers by all modes of transport

The PVI of the services of the section "Transport and warehousing" in January-June 2025 compared to the corresponding period last year amounted to 122.7%.

In January-June 2025, the republic's transport transported 550.8 million tons of cargo which is 10.9% more than the level of January-June 2024.

Cargo turnover during this period amounted to 275.7 billion t-km (increased of 12.8% compared to January-June 2024).

928 million passengers were transported (10.5% more than in January-June 2024).

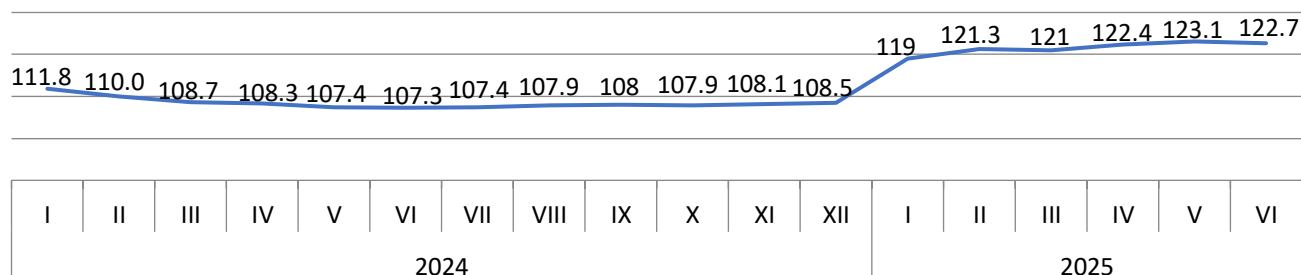
Passenger turnover amounted to 43.1 billion p-km (increased by 12% compared to January-June 2024).

Regionally in January-June 2025, increased in cargo turnover is noted in cities: Astana (19%), Almaty (5.2%), Atyrau (42.3%), Zhetisu (41.2%), Mangystau (28.2%), Turkistan (22.7%), Abay (26.6%), Pavlodar (20.8), Batys Kazakhstan (13.4%), Karagandy (10.2%), Almaty (9.6%), Kostanay (9.5%), Aktobe (8.7%), Kyzylorda (4.8%) and Soltustik Kazakhstan (2.2%) regions.

Passenger turnover increased in the following cities: Almaty (24.6%), Shymkent (22.8%), Almaty (1.9 times), Mangystau (31.1%), Abay (23.7%), Atyrau (19.7%), Kyzylorda (19.2%), Turkistan (18%), Karagandy (16.8%), Shygys Kazakhstan (10.4%), Aktobe (9.4%), Batys Kazakhstan (7.5%) and Pavlodar (7.4%) regions.

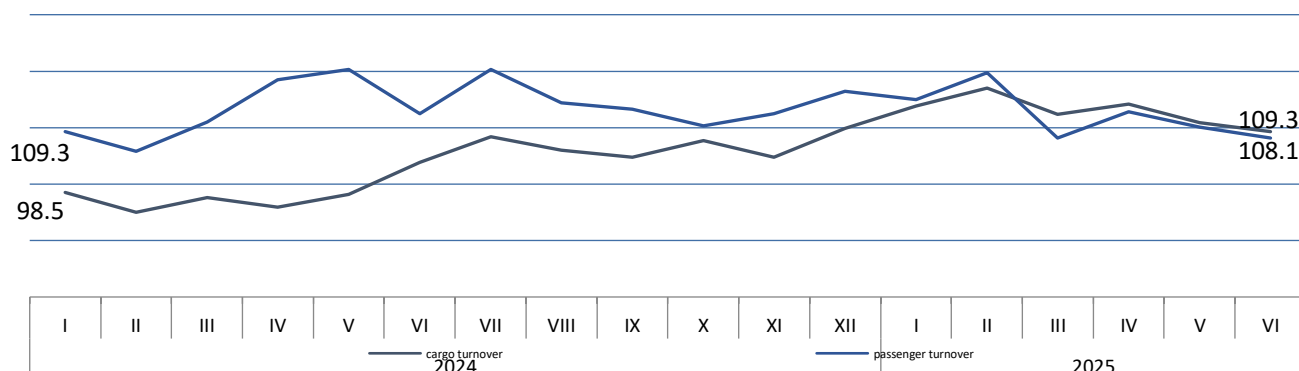
Physical volume index "Transport and warehousing"

as a percentage of the corresponding period of the previous year



Cargo and passenger turnover of the Republic of Kazakhstan

as a percentage of the corresponding month of the previous year



Cargo and passenger turnover for January-June 2025

	asa percentage	
	Cargo turnover	Passenger turnover
Republic of Kazakhstan	112.8	112.0
Abay	126.6	123.7
Akmola	98.7	53.6
Aktobe	108.7	109.4
Almaty	109.6	191.1
Atyrau	142.3	119.7
Batys Kazakhstan	113.4	107.5
Zhambyl	92.7	89.5
Zhetisu	141.2	91.4
Karagandy	110.2	116.8
Kostanay	109.5	57.5
Kyzylorda	104.8	119.2
Mangystau	128.2	131.1
Pavlodar	120.8	107.4
Soltustik Kazakhstan	102.2	75.0
Turkistan	122.7	118.0
Ulytau	99.2	86.8
Shygyz Kazakhstan	89.1	110.4
Astana city	119.0	98.3
Almaty city	105.2	124.6
Shymkent city	77.3	122.8

Railway transport

In January-June 2025, 222.1 million tons of cargo were transported by rail in the republic which is 12.4% up than the level of January-June 2024, cargo turnover during this period amounted to 166 billion. t-km (increased by 8% compared to January-June 2024), 9.5 million passengers were transported (6.9% less than in January-June 2024), passenger turnover amounted to 7.6 billion p-km (decreased by 2.3% compared to January-June 2024).

Automobile and urban electric transport

In January-June 2025, compared to the same period last year there was an increase in cargo transportation by 1.8% and cargo turnover of road transport increase by 40.8%. Passenger transportation and passenger transportation also increased by 10.7% and 20.1%, respectively.

Pipeline transport

In January-June 2025, 171 million tons of cargo were transported (18.2% more than in January-June 2024), cargo turnover amounted to 86.8 billion. t-km (increased by 17.1% compared to January-June 2024).

Air transport

In January-June 2025, 7.2 million passengers were transported by air transport of the republic (increased by 6.1% compared to January-June 2024), passenger turnover amounted to 14.1 billion p-km (increased by 9.4% compared to January-June 2024).

Inland waterway transport

In January-June 2025, 55.1 thousand tons of cargo were transported by inland waterway (decreased by 64.8% compared to January-June 2024), 94.8 thousand passengers were transported (increased by 27.8% compared to January-June 2024).

Marine and coastal transport

In January-June 2025, 1 943.5 thousands tons of cargo were transported by sea, there is an increase in cargo transportation by 42% compared to January-June 2024, cargo turnover amounted to 883.1 million tons-km and increased by 7.8% compared to January-June 2024.

Spreadsheets

[The main indicators of transport in the Republic of Kazakhstan](#)

2. Transport dynamics

Dynamic tables:

[The main indicators of transport operation in the Republic of Kazakhstan period and month](#)

[Gross output and PVI in the Transport and Warehousing section](#)

3. Glossary

Transported cargo – the amount of cargo in tons transported by transport.

Cargo turnover of transport– the volume of work of transport for the transportation of goods, expressed in ton-kilometers. It is defined as the sum of the products of the weight of each batch (shipment) of the transported cargo over the distance of its transportation.

Transported passengers – the number of passengers transported over a certain period of time. The unit of observation in passenger transportation statistics is a passenger-trip.

Passenger turnover of transport– the volume of work of transport for the transportation of passengers. The unit of measurement is the passenger-kilometer. i.e. the movement of 1 passenger over a distance of 1 kilometer. It is determined by summing the products of the number of passengers of each carriage by the distance of carriage in kilometers.

The physical volume index- is a relative indicator that characterizes the change in the quantitative volumes of freight and passenger traffic in the reporting period compared to the base period and is calculated on the basis of the weighted average growth rate of revenue from the transportation of goods and passengers.

4. Methodological explanations

The release provides statistical data on the work of enterprises with the main type of activity - transport (OKED code 49-51), reporting on the monthly form 1-transport. enterprises of other sectors of the economy engaged in the transportation of passengers and cargo on a commercial basis, as well as individual entrepreneurs engaged in the transportation of goods and passengers by road on a commercial basis. reporting according to quarterly forms: 1-sole proprietor (auto cargo), 1-sole proprietor (auto passengers).

5. Useful links

[Methodology for the formation of transport statistics indicators](#)

[Form 1-Transport "Transport Performance Report"](#)

[Main indicators of transport performance. Quality Report. 2018.](#)

[Transport performance indicators. Information and analytical system "Taldau"](#)

Responsible for release:
Department of Services and
Energy Statistics

**Acting Director of the
Department:**
G.Aigozina
Tel.+7 7172 749077

Executor:
Sh.Shukerbaeva
Tel. +7 7172 749771
E-mail: sh.shukerbaeva@aspire.gov.kz

Address: 010000, Astana city
Mangilik el avenue, 8
House of Ministries, Entrance 4
