

Transport in the Republic of Kazakhstan

Date of publication: 12.03.2025

Date of next publication: 14.04.2025

[1. Key points](#)

[2. Transport dynamics](#)

[3. Glossary](#)

[4. Methodological explanations](#)

[5. Links to related publications](#)

[6. Useful links](#)

[1. Key points](#)

Transportation of goods and passengers by all modes of transport

The PVI of the services of the section "Transport and warehousing" in January-February 2025 compared to the corresponding period last year amounted to 121.3%.

In January-February 2025, the republic's transport transported 178.0 million tons of cargo which is 18.8% more than the level of January-February 2024.

Cargo turnover during this period amounted to 89.8 billion. t-km (increased of 15.4% compared to January-February 2024).

289.2 million passengers were transported (13% more than in January-February 2024).

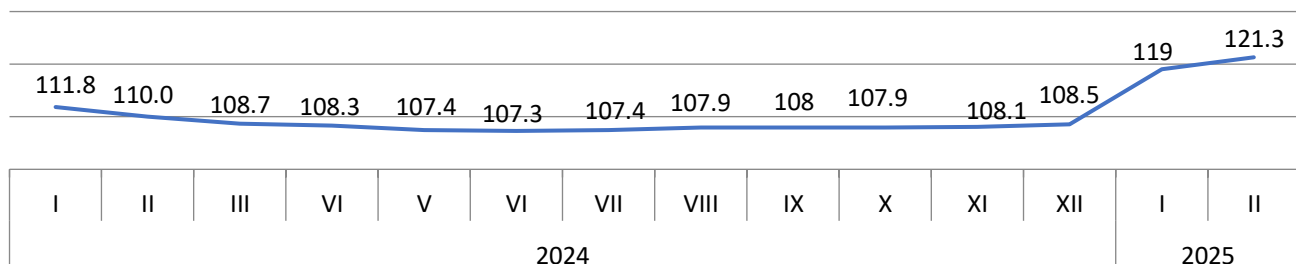
Passenger turnover amounted to 13.7 billion p-km (increased by 17.2% compared to January-February 2024).

Regionally in January 2025, increased in cargo turnover is noted in cities: Astana (32.1%), Almaty (28.8%), Shymkent (0.6%) and Atyrau (36%), Pavlodar (32.8%), Mangystau (27.2%), Kostanay (19.8%), Almaty (18%), Batys Kazakhstan (16.9%), Abay (14.6%), Karagandy (12.4%), Zhetisu (11.1%), Kyzylorda (7%), Turkistan (6.8%), Aktobe (6.4%) and Akmola (4.8%) regions.

Passenger turnover increased in the following cities: Almaty (26.3%), Shymkent (11.1%), Astana (2.1%) and Almaty (2.3 times), Mangystau (60%), Atyrau (58%), Abay (21.7%), Kyzylorda (18.6%), Batys Kazakhstan (15.7%), Karagandy (14.3%), Aktobe (11.2%), Pavlodar (9.1%), Shygys Kazakhstan (7.9%) and Turkistan (1.1%) regions.

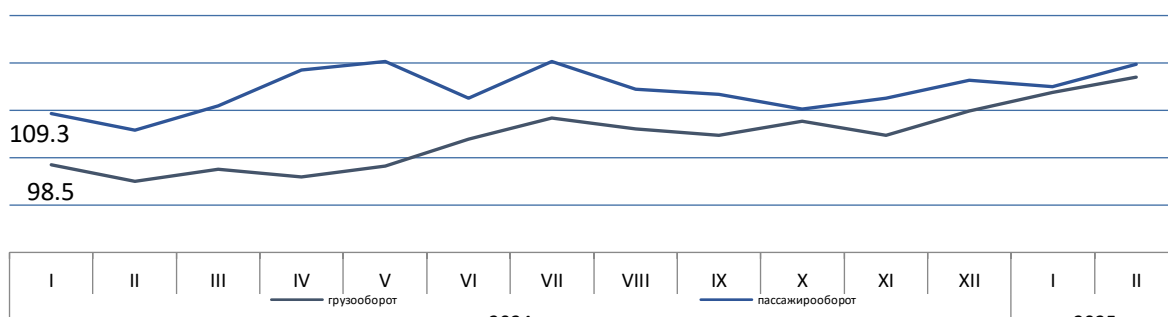
Physical volume index "Transport and warehousing"

as a percentage of the corresponding period of the previous year



Cargo and passenger turnover of the Republic of Kazakhstan

as a percentage of the corresponding month of the previous year



Cargo and passenger turnover for January-February 2025

		asa percentage	
	Cargo turnover	Passenger turnover	
Republic of Kazakhstan	115.4		117.2
Abay	114.6		121.7
Akmola	104.8		59.3
Aktobe	106.4		111.2
Almaty	118.0		234.7
Atyrau	136.0		158.0
Batys Kazakhstan	116.9		115.7
Zhambyl	98.0		92.3
Zhetisu	111.1		87.3
Karagandy	112.4		114.3
Kostanay	119.8		75.3
Kyzylorda	107.0		118.6
Mangystau	127.2		160.0
Pavlodar	132.8		109.1
Soltustik Kazakhstan	98.7		73.7
Turkistan	106.8		101.1
Ulytau	96.1		86.3
Shygyz Kazakhstan	94.6		107.9
Astana city	132.1		102.1
Almaty city	128.8		126.3
Shymkent city	100.6		111.1

Railway transport

In January-February 2025, 73.2 million tons of cargo were transported by rail in the republic, which is 18.9% up than the level of January-February 2024, cargo turnover during this period amounted to 54.6 billion t-km (increased by 11.8% compared to January-February 2024), 3.2 million passengers were transported (6.7% more than in January-February 2024), passenger turnover amounted to 2.4 billion p-km (decreased by 3.2% compared to January-February 2024).

Automobile and urban electric transport*

In January-February 2025, compared to the same period last year there was an increase in cargo transportation by 18.2% and cargo turnover of road transport increase by 68.8%. Passenger transportation and passenger transportation also increased by 13.4% and 33.3%, respectively.

Pipeline transport

In January-February 2025, 56.1 million tons of cargo were transported (18.7% more than in January-February 2024), cargo turnover amounted to 27.7 billion t-km (increased by 13.1% compared to January-February 2024).

Air transport

In January-February 2025, 2.2 million passengers were transported by air transport of the republic (increased by 6.6% compared to January-February 2024), passenger turnover amounted to 4.5 billion p-km (increased by 9.3% compared to January-February 2024).

Marine and coastal transport

In January-February 2025, 695.0 thousand tons of cargo were transported by sea, there is an increase in cargo transportation by 67.9% compared to January-February 2024, cargo turnover amounted to 305.4 million tons-km and increased by 19.1% compared to January-February 2024.

Spreadsheets

[The main indicators of transport in the Republic of Kazakhstan](#)

2. Transport dynamics

Dynamic tables:

[The main indicators of transport operation in the Republic of Kazakhstan period and month](#)

[Gross output and PVI in the Transport and Warehousing section](#)

3. Glossary

Transported cargo – the amount of cargo in tons transported by transport.

Cargo turnover of transport– the volume of work of transport for the transportation of goods, expressed in ton-kilometers. It is defined as the sum of the products of the weight of each batch (shipment) of the transported cargo over the distance of its transportation.

Transported passengers – the number of passengers transported over a certain period of time. The unit of observation in passenger transportation statistics is a passenger-trip.

Passenger turnover of transport– the volume of work of transport for the transportation of passengers. The unit of measurement is the passenger-kilometer. i.e. the movement of 1 passenger over a distance of 1 kilometer. It is determined by summing the products of the number of passengers of each carriage by the distance of carriage in kilometers.

The physical volume index- is a relative indicator that characterizes the change in the quantitative volumes of freight and passenger traffic in the reporting period compared to the base period and is calculated on the basis of the weighted average growth rate of revenue from the transportation of goods and passengers.

4. Methodological explanations

The release provides statistical data on the work of enterprises with the main type of activity - transport (OKED code 49-51), reporting on the monthly form 1-transport. enterprises of other sectors of the economy engaged in the transportation of passengers and cargo on a commercial basis. as well as individual entrepreneurs engaged in the transportation of goods and passengers by road on a commercial basis. reporting according to quarterly forms: 1-sole proprietor (auto cargo). 1-sole proprietor (auto passengers).

5. Useful links

[Methodology for the formation of transport statistics indicators](#)

[Form 1-Transport "Transport Performance Report"](#)

[Main indicators of transport performance. Quality Report. 2018.](#)

[Transport performance indicators. Information and analytical system "Taldau"](#)

Responsible for release:
Department of Services and
Energy Statistics

Director of the Department:
G. Karaulova
Tel. +7 7172 749060

Executor:
Kuandykov B.
Tel. +7 7172 749771
E-mail: b.kuandykov@aspire.gov.kz

Address: 010000, Astana city
Mangilik el avenue, 8
House of Ministries, Entrance 4
